

## 2015 Annual Report



# Contents

About .....	3	<b>People .....</b>	<b>26</b>
Key Achievements .....	5	Staff Profiles .....	27
Director's Report .....	6	Students .....	30
Deputy Director's Report .....	8	Honorary, Affiliate and Adjunct Staff .....	32
Centre Highlights .....	10	Advisory Board .....	32
Youth and Substance Use in the 2013 National Drug Strategy Household Survey .....	11	Major Partners and Collaborators .....	33
<b>Impact .....</b>	<b>13</b>	<b>Appendicies .....</b>	<b>34</b>
Community Impact .....	14	Peer-reviewed Publications .....	35
Policy Impact .....	19	Book Chapters and Monographs .....	40
Scientific Impact .....	21	Conference Presentations .....	41
Media Impact .....	24	Grants New and Awarded in 2015 .....	45
		Continuing in 2015 .....	46
		Cysar Co-investigators New or Awarded in 2015 .....	47
		Cysar Co-investigators Continuing in 2015 .....	48
		Research Higher Degrees On-Going .....	49



Finding solutions, improving futures,  
*partnering with young people.*



# About CYSAR

The Centre for Youth Substance Abuse Research (CYSAR) was established in 2008 through the shared vision of the Graeme Wood Foundation and The University of Queensland.

CYSAR seeks to promote the health and well-being of young people by increasing Australia's capacity to respond effectively to any harm arising from substance use.

#### CYSAR aims to:

- Understand the pathways to harmful substance use
- Research innovative ways of preventing and treating substance misuse
- Support the development and evaluation of evidence-based improvements to youth substance use services
- Influence state and national approaches to the prevention and treatment of problematic substance use by young people through information dissemination, policy refinement and public advocacy
- Involve young people in the Centre's research

CYSAR partnerships have made it possible to draw together the research and clinical expertise of internationally regarded Australian scholars in the field of substance use disorders.

#### CYSAR's partner organisations are:

- Faculty of Health and Behavioural Sciences, The University of Queensland
- The Institute of Health and Biomedical Innovation, Queensland University of Technology

CYSAR is supported by The University of Queensland Endowment Fund with a philanthropic contribution from Graeme Wood and Andrew Brice.

#### Research at CYSAR focuses on:

- Generating knowledge about the development, prevention and treatment of youth substance misuse
- Dissemination of new findings to individuals, health services, government and the community to make positive changes for young people and their community
- Advocating for improved access to evidence-based treatment and prevention for young people
- Engaging with young people and youth health services to ensure that CYSAR's research is responsive to community needs

# Key Achievements 2013 – 2016



195

Peer-Reviewed Journal Articles

1

Book

{ 17 Book Chapters }



42

Reports and Monographs

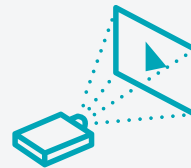


{ 3 Commissioned Reports }



719

Citations



64

Conference Presentations

4

Invited Talks



2

Completed PhDs



{ 9 PhD Students }



11

Research and Support Staff



10

Associate and Affiliate Staff



# Director's Report



**Excellence**  
in research performance



**Success**  
in obtaining funded fellowships



**Recognition**  
with awards and promotions

## External Review

At the end of 2014 Professors Steve Allsop (Curtin University), Jane Pirkis (University of Melbourne), Robert King (QUT), and Christina Lee (UQ) conducted an external review of CYSAR's performance.

**The Review panel commended CYSAR on its excellent research performance, its success in obtaining funded fellowships from NHMRC and ARC, and the high quality of researchers recruited to the Centre.**

It also noted on the strong academic relationships and good will within the Centre and between the UQ and QUT nodes and the strong mentorship provided to students and post-doctoral fellows.

The review made a number of constructive recommendations for the future. One was for the Centre to revise its strategic plan to address the expectations of the major donor, provide a stronger focus on internal collaboration and provide a mission statement that built unity of purpose across UQ and QUT staff. The plan also needed to identify priorities for funding and strategies to improve relations with organisations in service delivery, advocacy, and policy.

It also suggested that CYSAR ensure its financial sustainability by teaching into coursework and research programs at UQ and conducting short courses and in-service activities that supported the strategic directions of the Centre.

In May 2015 CYSAR held a facilitated strategic planning day to undertake the tasks recommended by the review. We have regularly reviewed progress on these issues in our staff meetings.

At the end of 2015 the peak Non-Government Organisation for alcohol and drug treatment services in Queensland, Lives Lived Well, approached CYSAR about funding a Professorship for 5 years to conduct research that would improve the treatment of persons with common forms of addiction and comorbid mental disorders such as depression, anxiety disorders and psychoses. UQ has agreed to provide matching funding to support a post-doctoral fellow and PhD student to work with the Professor on treating comorbid disorders. The position will be advertised in 2016.

In 2015 the achievements of CYSAR's staff were recognised by research awards and promotions. Dr Matthew Gullo received the HABS Faculty Early Career Research Excellence Award; Dr Gary Chan received a UQ Early Career Fellowship; and Associate Professor Jason Connor was promoted to Professor.

## International research impact

Professor Wayne Hall was invited by the World Health Organization (WHO) to write a commissioned review on the adverse effects of cannabis on young people and to present this to an expert meeting in Stockholm in April 2015. At that meeting he was also asked to assist WHO staff in compiling and editing a detailed report on adverse health effects of cannabis that WHO would present to the UN General Assembly Special Session (UNGASS) on Drugs in April 2016. He gave a paper summarising this report at a meeting convened by the UN Office of Drugs and Crime and WHO in Vienna in December 2015.

**Jason Connor and Wayne Hall published an invited paper in the Lancet, one of the world's leading medical journals, on how to diagnose and treat alcohol dependence.**

Wayne Hall is also an author on three papers in Lancet Psychiatry on what we know about the prevalence, treatment and prevention of adolescent substance abuse. These papers will also be published on line in April 2016 time to inform the UNGASS on drugs.

## Major research projects

Professor Jason Connor's NHMRC project at the PA Hospital has now recruited over 300 participants into a randomised control clinical trial investigating how best to target psychological and pharmacological therapies to persons with alcohol dependence.

**Professor Rosa Alati began a new ARC project Into the Thirties looking at predictors and consequences of risky drinking in young people aged 30.**

Associate Professor Adrian Kelly, in collaboration with researchers from the schools of Education, Nursing and Midwifery, Social Work, and Social Science received a UQ HASS Strategic Research Funding Award to look at how education institutions can reproduce or disrupt disparities in wider society.

Professor Wayne Hall, Associate-Professor Leanne Hides and Megan Weier were involved in an evaluation of a mobile abstinence program for the social marketing group Hello Sunday Morning. HSM is a social media group that aims to moderate the alcohol use of young Australians. Associate Professor Leanne Hides continued with the QuikFix project, focusing on people with AOD-related injuries in the Fortitude Valley.



**So far 398 young persons with AOD-related injuries have received telephone-based brief intervention treatments.**

Dr Catherine Quinn is leading the Adolescent Aware project. She has recruited 2,200 students from 14 schools in South-East Queensland to examine factors underlying substance use, such as bullying, mental health, and wellbeing in early adolescence.

Associate Professor Leanne Hide and Dr Catherine Quinn have also been working with the Queensland Injury Surveillance Unit, Adolescent Drug and Alcohol Withdrawal Service, the CYMHS Afterhours response team and Dual Diagnosis team to increase the identification and referral of young people presenting at the Lady Cilento Children's Hospital with AOD injuries to telephone delivered brief intervention treatment.

## Media and engagement

CYSAR's work has been in the media in 2015. Professor Wayne Hall was interviewed as part of the Brisbane Writers Festival for a Radio National program 'Your Brain on Drugs'. Charmaine Jensen's work on the use of stimulant medication by university students for cognitive enhancement has received a fair amount of media interest. The results of her survey of student use of these drugs are eagerly awaited by the media. Professor Wayne Hall gave a talk at a UQ Alumni Global Leadership Series event at Customs House on cannabis policy experiments in the USA.

Megan Weier (who is responsible for the Centre's website and promoting the Centre) has been fostering better community relationships in Brisbane. She has provided research support to Brisbane Youth Service, Dovetail, and appeared on 4ZZZ Community Radio to talk about youth issues. Stoyan Stoyanov was interviewed for SYN: Schools on Air about Ray's Night Out app in the lead up to as schoolies week in November 2015.

## Research students

In 2015 CYSAR had a total of 7 PhD students. Another 4 students will start doctorates in 2016 giving the Centre a critical mass of postgraduate students.



7

Continuing  
PhD students



4

New Doctoral  
students

Their work is being fostered by student meetings that are held once a month to provide support and community while undergoing the PhD process. These meetings also allow students to present plans for studies, early findings, and to have practice runs of Conference papers.

All of these very positive developments in 2015 have set CYSAR up well to continue to be as productive in 2016 and beyond.

**Wayne Hall**  
**Director**



# Deputy Director's Report

Professor David Kavanagh's success in receiving the 2015 Distinguished Contribution to Psychological Science Award from the Australian Psychological Society (APS) was the major highlight of the QUT arm of CYSAR in 2015. All reports confirm Professor Kavanagh also provided a fantastic opening keynote address at the 50th National APS Conference, where he received the award. Professor Kavanagh was also successful in obtaining a NHMRC Project Grant to test his new Functional Imagery Treatment for Alcohol Use Disorder (APP1099400).

**Talk about a fantastic way to top off an outstanding year! It's great to see Professor Kavanagh's wealth of knowledge and experience in the addiction field recognised.**

Other highlights include Professor Ross Young's keynote address on How genetics can provide more effective responses to addictive behaviours at the Australasian Professional Society for Alcohol and other Drugs (APSAD) Conference in Perth.

**The QUT node of CYSAR also relocated to the exciting new Children's Centre for Health Research in 2015.**

Located opposite the world-class Lady Cilento Children's Hospital, this move has enabled CYSAR staff to develop new research collaborations with hospital and community leaders in child and adolescent health. This includes a new project with the Adolescent Drug and Alcohol Withdrawal Service (ADAWS), the Drug and Alcohol Brief Intervention Teams (DABIT) at RBWH, Gold Coast, Robina and Logan Hospitals and the Child and Youth Mental Health Service (CYMHS) Dual Diagnosis team aimed at increasing the identification and referral of young people with alcohol and other drug injuries and illness accessing Emergency Departments in Brisbane, Logan and the Gold Coast to telephone delivered brief intervention treatment. Associate Professor Leanne Hides and Dr Catherine Quinn are leading this project.

Dr Catherine Quinn is also leading the Adolescent Aware project, which is examining factors underlying substance use in early adolescence, such as bullying, mental health, and wellbeing.

**She has recruited 2,200 year 7 and 8 students from 14 schools in South-East Queensland and will follow them up for the next three years.**

Dr Quinn has also been providing guest lectures on youth substance use to 40 QUT Masters in Developmental Psychology/Clinical Psychology students and over 300 undergraduate psychology students.



**2,200**

**South-East Queensland Students  
will be followed**

**Work on our three NHMRC Targeted Call for Mental Health Research Project Grants has continued:**

- **QuikFix project (Lead by Leanne Hides):** Recruitment for this project is now complete. Nearly 1,091 young people with AOD-related injuries/illnesses were identified in the Brisbane Drink Safe Precincts over 18 months in partnership with ChaplainWatch and the DABIT team at RBWH. Of these 437 met study inclusion criteria and 398 were provided with telephone-based brief intervention treatment. Initial results indicated the QuikFix personality targeted brief intervention is the most effective. DABIT and ADAWs staff.
- **Social Wellbeing and Engaged Living (SWEL; Lead by Leanne Hides):** This clinical trial is determining the efficacy of a telephone delivered SWEL intervention. To date 197 adolescents who have disengaged from education, employment and training have been identified, of which 120 have been provided with up to 8 sessions of treatment. This project is being conducted in partnership with Boystown/Kids Helpline, YMCA Vocational Schools and the Qld Education Get Real program.



# 197

Young alcohol users tested the effectiveness of the Ray's night out app



Increase in alcohol knowledge and reductions in alcohol use were found

- **Climate Schools Combined** (Lead by Professor Maree Teesson at the National Drug & Alcohol Research Centre (NDARC), University of NSW; QUT site lead by Leanne Hides): This trial is determining the efficacy of an innovative internet-based approach to preventing mental health and substance use problems in 6,996 Australian students across 74 high schools in QLD, WA and NSW. All internet treatment is complete the two final follow ups will be completed in 2016.

QUT's work on technology-based solutions to youth substance use as part of the Young and Well Cooperative Research Centre ([www.youngandwellcrc.org.au](http://www.youngandwellcrc.org.au)) has continued.

- **Ray's night out:** This iPhone app utilises a harm minimisation approach to promote safer drinking practices in young people. This study recruited 197 young alcohol users into a RCT to test the effectiveness of the app. A significant increase in alcohol knowledge and reductions in the alcohol use were found.
- **Keep it Real:** This brief web-based program targets psychotic like experiences (PLEs) in cannabis users. We found the program resulted in reductions in the frequency of both PLEs and cannabis use in a clinical trial with 226 young people.

In 2015, we also welcomed a new PhD student. Miss Nina Pocuca's PhD will examine the impact of personality risk profiles on the onset and trajectory of alcohol use in the 6,996 adolescents enrolled in the Climate Schools Combined study. She has an Australian Postgraduate Award (APA) scholarship and a CYSAR Top Up Scholarship. Our other two PhD students, Mr Tim Piatkowski, who is exploring body image drug use in young men and Mr Daniel Demant who is exploring substance use among LGBT youth are progressing well.

QUT welcomed the recommendations from the 2015 CYSAR review to build stronger unity of purpose across UQ and QUT staff. The CYSAR strategic planning day identified a number of shared research and funding priorities, that we look forward to bringing into fruition in 2016.

**Associate Professor Leanne Hides**  
**Deputy Director CYSAR**

# Centre Highlights

## Summer Interns

Each year, The University of Queensland provides opportunities for undergraduate and Masters coursework students to gain experience in conducting research, critical thinking, and communication skills. At the beginning of 2015, two summer interns, Maddison Riachi and Louisa Chatterton worked with Doctor Matthew Gullo and Professor Jason Connor on research into targeted treatment for adolescents and hospital outpatients. At the end of 2015, a further two interns, Laura Anderson and Chloe Kidd, worked with Matthew and Jason on these projects. The program is a wonderful opportunity for enthusiastic students to gain experience in conducting research. Dr Gullo has been coordinating the Centre's involvement in the program since his arrival in 2012.

**He believes it provides the Centre with a valuable opportunity to promote the work that it does, spanning from the laboratory to the clinic.**

## Dr Gullo HABS Research Excellence Award

During the UQ Faculty and Health and Behavioural Sciences Research Week, Dr Matthew Gullo was awarded the Early Career Research Excellence Award.

**The award recognises the exceptional contribution Dr Gullo has made to the field of adolescent impulsivity and substance use.**

The award adds to Dr Gullo's strong track record of receiving recognition for the high impact work he does. In line with this, he was promoted to Senior Research Fellow later in the year.

## Staff recognition

**We are fortunate at CYSAR to have a wide range of talented and high-achieving staff. Our staff have a range of research interests, spanning experimental and clinical trials, policy debates, and statistical modelling.**

Associate Professor Jason Connor was promoted to Professor at the end of 2015, recognising his work investigating youth substance abuse prevention, as well as psychological and pharmacological treatments for alcohol dependence.

Doctor Gary Chan, a postgraduate fellow at the Centre, received a UQ Early Career Research Grant. The award is highly competitive, and is a testament to Dr Chan's innovative and high quality work that he has conducted at the Centre focusing on the developmental trajectories of substance use among adolescents. Dr Chan will be able to continue his work at the Centre in the following years, including conducting complex statistical modelling and the use of large datasets.

## QUT Arm Relocates

CYSAR staff members Associate Professor Leanne Hides, Dr Catherine Quinn, and PhD Students Daniel Demant, Timothy Piatkowski and Nina Pocuca relocated to the newly established Centre for Children's Health Research, located at the Lady Cilento Children's Hospital in South Brisbane. The Centre is an integrated research facility that is focused on child and adolescent health research and services. The new location next to the Children's Hospital has allowed for new collaborations between researchers and health practitioners. Associate Professor Hides and Dr Quinn have established collaborative relationships with the Child Youth and Mental Health Services and the Adolescent Drug and Alcohol Withdrawal Service, among others, to increase the identification and referral of young people presenting to the Lacy Cilento Children's Hospital with alcohol or other drug related injuries or illness to brief telephone intervention treatments.

# Youth and Substance Use in the 2013 National Drug Strategy Household Survey

In 2013\* among Australians aged 14 to 25:



**74%** had drunk alcohol in the last 12 months

- 30%** indicated they drank 7 or more standard serves of alcohol on a typical drinking day
- 29%** indicated they had reduced the amount of alcohol they drank
- 33%** reduced the number of times they drink
- 9%** had stopped drinking in the last 12 months



**14%** smoke cigarettes daily

- 8%** used to smoke daily but have since given up
- 7%** tried to give up smoking unsuccessfully



**34%** indicated they had tried marijuana

- 20%** had used marijuana in the last 12 months
- 2.3%** said they found in the last 12 months they couldn't stop or cut down the amount of marijuana they used



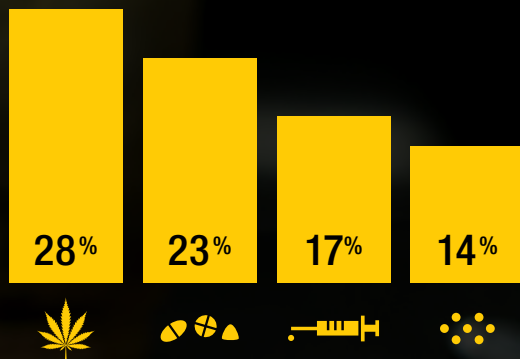
**7%** reported ever using meth / amphetamine

- 7%** reported ever using cocaine
- 14%** reported ever using ecstasy

# Youth and Substance Use in the 2013 National Drug Strategy Household Survey

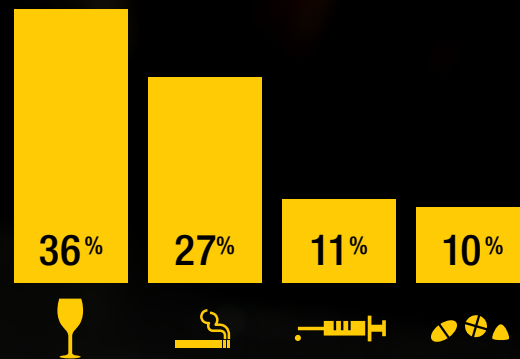
## When people talk about a “drug problem”:

- 28% thought of marijuana
- 23% thought of methamphetamine
- 17% thought of heroin
- 14% thought of cocaine



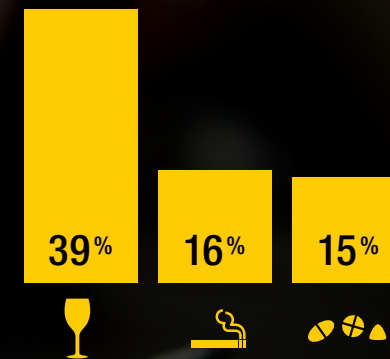
## When asked which drug causes the most deaths in Australia:

- 36% said alcohol
- 27% said tobacco
- 11% said heroin
- 10% said methamphetamine



## When asked which form of drug use were the most serious concern for the community:

- 39% said excessive drinking of alcohol
- 16% said smoking tobacco
- 15% said the non-medical use of methamphetamine



\*Based on stratified samples of self-report data from the National Drug Strategy Household Survey.

SECTION 2

# IMPACT



# Community Impact

## Target Treatment of Alcohol Use Disorders Trial

Little progress has been made in the last decade in achieving better treatment outcomes for alcohol-related health problems. Professor Jason Connor has been running a clinical trial at the Princess Alexandra Hospital since 2013, in which patients at the Alcohol and Drug Assessment Unit will receive personalised treatment based on their psychological and genetic risks, as well as their pharmacotherapy. The program includes a computer database that keeps therapists up to date with the progress of patients, and allows for easier comparison of assessment and progress data across patients. It is expected that the study will form a new kind of alcohol use disorder treatment, including tailored treatment approaches that optimise therapies based on each individual's unique psychological and genetic makeup. 300 patients have enrolled in the last two years.

### CYSAR Members:

Professor Jason Connor, Dr Matthew Gullo, Jason Coates

## Predictors of treatment outcome in cannabis use disorder.

Cognitive-behavioral therapy (CBT) is an effective treatment for cannabis use disorder, but relapse rates remain high. Little is known about the pre-treatment factors predictive of response to this treatment. This is the focus of a new program of research being led by Dr Matthew Gullo at the Alcohol and Drug Assessment Unit, Princess Alexandra Hospital. Patients entering the Unit's cannabis abstinence program undergo a comprehensive assessment, including measurement of key psychological factors targeted in CBT. Data has already been collected on more than 200 patients. It is hoped this new program of research will provide health professionals with new tools in the treatment of this mental disorder.

### CYSAR Members:

Dr Matthew Gullo, Professor Jason Connor

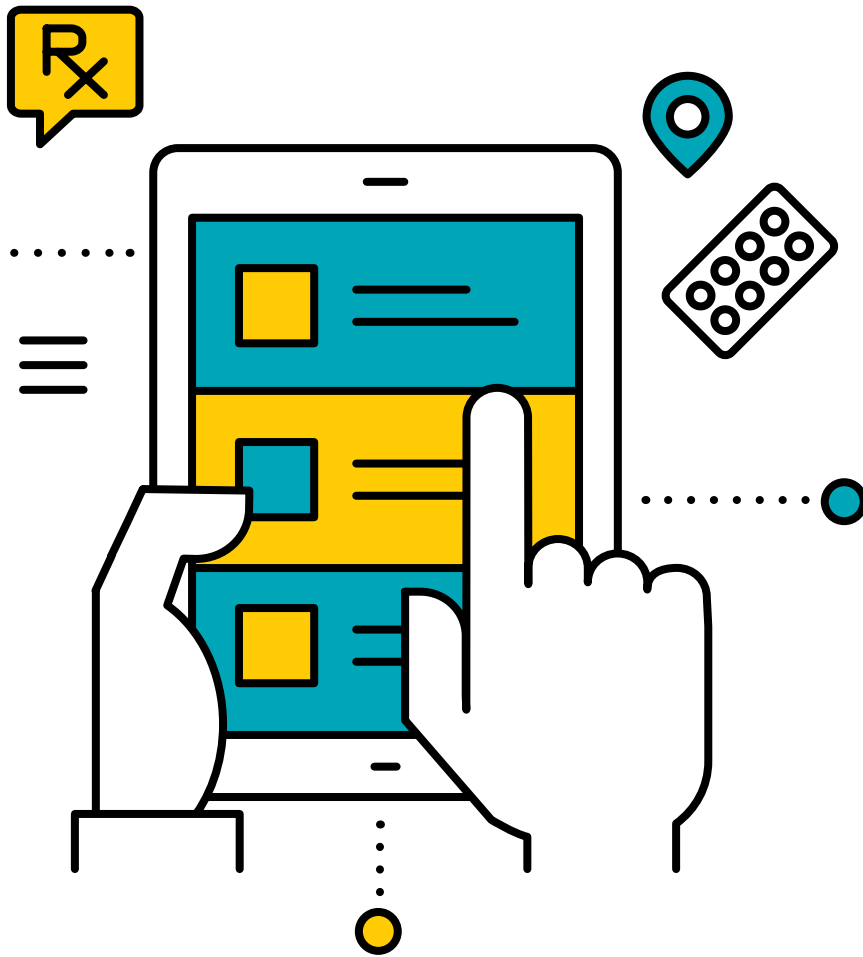


The background is a dark blue color with a repeating pattern of light blue silhouettes of human figures and alcohol bottles. The silhouettes are arranged in a grid, with some bottles interspersed among the human figures.

# 300

*patients*

were part of a trial to improve treatment outcomes  
for alcohol use disorders



2,800

School students completed their third follow up survey in 2015

## Internet-based prevention for anxiety, depression and substance use in young Australians

Internet interventions have many advantages: they are accessible, economical, and can be less intimidating for individuals who are nervous about seeking help. The Climate Schools Combined (CSC) study, running since 2013, utilises an integrative approach including both a substance use and mental health course that is predicted to be more effective in reducing problems with substance use and mental health compared to stand-alone interventions or standard school-based health education. CYSAR Deputy Director Associate Professor Leanne Hides is working with a team at the National Drug and Alcohol Research Centre, led by Professor Maree Teesson, to evaluate the internet-based interventions as they are trialled across 26 Australian schools. In 2015, 2,800 school students completed their third follow up survey, and select students completed the Climate Schools Mental Health course. Students will be followed up again in 2016 to assess the influence of the combined intervention in reducing the experience of substance use and mental health symptoms and problems.

**CYSAR Member:**  
Associate Professor Leanne Hides

## Adolescent Aware

Changing bodies, future careers, and social problems such as bullying and exclusion are just some of the many challenges that adolescents face in high school. Too often, external circumstances such as bullying can impact internal states of young people, resulting in poor mental health, wellbeing, and susceptibility to substance misuse. In 2015, QUT Postdoctoral Fellow, Dr Catherine Quinn, along with Associate Professor Leanne Hides and Dr Gary Chan, began recruiting and following 2,200 students from 14 schools across South-East Queensland. Titled 'Adolescent Aware', the project will track and examine how factors such as bullying, mental health, and wellbeing can influence substance use in high school students. The longitudinal study will continue to follow students until 2017. As part of the study, schools that are involved are provided with a confidential annual report, specific to their school, with updates on outcomes from the project.

**CYSAR Members:**  
Dr Catherine Quinn, Associate Professor Leanne Hides, Dr Gary Chan



# 68%

of Australians aged 14 to 17  
report having ever tried alcohol

## Web resources for youth substance use information and support

In response to suggestions from the 2014 UQ Faculty review of the Centre, increasing and maintaining advocacy to the community regarding youth substance use has been a priority for development in 2015. Rather than speaking on behalf of youth, our approach has been to position the Centre as a source of reliable, research-driven information regarding the rates of youth substance use, the potential harms of certain drug use, as well as information on available drug and alcohol support services. To make the content friendly and accessible, the information has been presented in the form of brief fact sheets or infographics. It is hoped that the resources are helpful to both individuals in the community, as well as schools, youth service, and other groups interested in the wellbeing of young people. The resources are available on the [CYSAR website](#).

CYSAR Member: Megan Weier



## Assisting Dovetail with Workforce Retention survey

Dovetail is a clinical advice and professional support service to the youth alcohol and drug sector in Queensland. The service is located in Brisbane, and offers resources, training, and service advice to workers ranging from Alcohol and Other Drug counsellors and care workers, to youth workers, occupational therapists, and Aboriginal and Torres Strait Islander health workers. As a way of providing support to the valuable work Dovetail does in the community, CYSAR staff have connected with the service to offer meet any research needs the service may require. In late 2015, a workforce attraction and retention survey was sent out to members Dovetail's email subscription list. The aim of the survey is gain a better understanding of who is accessing Dovetail's services, what kinds of training they receive in drug and alcohol support, and what Dovetail could focus their service on to optimise its support to its subscribers. Senior research assistant Megan Weier, who created and manages the survey, has been invited to present the results of the survey at Dovetail's annual AOD workforce training day in early 2016.

**CYSAR Members:**  
Megan Weier, Professor Wayne Hall

## Into the Thirties: Examining the consequences of risky drinking

It is largely understood that most risky drinkers will 'mature out' of hazardous alcohol consumption between late adolescence and age 30 in the process of making important transitions into adulthood, such as marrying and having children. Generational changes in gender roles and traditional family structures that are believed to produce this decline may be changing in ways that affect this decline in risky drinking and allow risky drinking patterns to persist into the thirties. The ARC project 'Into the Thirties: Persistence and consequences of risky drinking' aims to examine the extent to which an Australian cohort continue to engage in risky drinking into their thirties. It will also examine how changes in gender roles and the social context of alcohol use may lead to excessive drinking into adulthood. The project, led by CYSAR staff member Professor Rosa Alati, will investigate the impact of intimate partner violence and relationship quality, antisocial behaviour and violence, and the role of other types of addiction may play in the persistence of problematic alcohol use into the thirties. Participants will be recruited from the Mater University Study of Pregnancy, a longitudinal cohort study which began in 1981. The project has continued to follow 6,822 mothers and their children up to 30 years after pregnancy. The longitudinal data provides a comprehensive and superior insight into the development of alcohol use disorders and their related consequences.

**CYSAR Member:** Professor Rosa Alati



6,822

Mothers and their children  
are being studied  
up to 30 years after pregnancy

The data provides an insight into the development of alcohol use disorders and their related consequences





# Policy Impact

## WHO review of adverse effects of cannabis

CYSAR Director Professor Wayne Hall was invited by the World Health Organization to write a commissioned review on the adverse effects of cannabis on young people and to present this to an expert meeting held in Stockholm in April 2015. The report covered what his evidence has shown about recreational cannabis use, including dependence, reduced academic attainment, and increased likelihood of experiencing psychosis. At the Stockholm meeting he was invited to assist WHO staff in compiling and editing a detailed WHO report on adverse health effects of cannabis to be presented to the UN General Assembly Special Session (UNGASS) on Drugs in April 2016. Professor Hall gave a summary of this report at a UN meeting convened by the UN Office of Drugs and Crime and WHO in Vienna in December 2015. The World Health Organization is the UN agency for world health and public health matters and a respected source of information on health policy, particularly on alcohol and other drug use.

**CYSAR Member:** Professor Wayne Hall

## National trials of medical cannabis starting in 2016

In April 2015, the Queensland Government announced it would be partnering with the New South Wales Government to trial medicinal cannabis products to treat children with severe, drug resistant epilepsy. Australia is yet to develop a pharmaceutical product that is safe for testing and trialling. One aim of the NSW trial is to develop a product that is high in cannabidiol, which is thought to have therapeutic effects in patients with epilepsy.

In 2016, researchers will begin recruiting children with severe drug-resistant epilepsy to take part in a clinical trial testing cannabis-derived drug, CBDV. CYSAR Director Professor Wayne Hall has been asked to join a committee to be chaired by Jeanette Young, the Chief Health Officer of Queensland which oversees the Queensland arm of the trial.

**CYSAR Member:** Professor Wayne Hall

## Hello Sunday Morning: Evaluating the effectiveness of mobile applications

In 2010, social marketers started an online community platform known as Hello Sunday Morning (HSM), with the aim of helping individuals change their relationship with alcohol by taking a break from drinking, or cutting back on the amount they consume. The program encourages users to experience “a world of better choices, fewer hangovers and unforgettable Sunday mornings.” In 2015, HSM, with support from Vodafone, release an iPhone app which aimed to encourage participants to set weekly challenges to reset their drinking habits. CYSAR staff Professor Wayne Hall, Associate Professor Leanne Hides and Megan Weier were involved in a project to evaluate the effectiveness of both the online and mobile platforms. Led by UQ researchers Dr Carla Meurk and Dr Nicholas Carah, the project looked at the responses and engagement of over 10,000 individuals worldwide who used the app to monitor their drinking. The evaluation will provide feedback to HSM to increased program effectiveness, and will be also used to seek future funding from government, and other for-profit organisations.

**CYSAR Members:** Professor Wayne Hall,  
Associate Professor Leanne Hides,  
Megan Weier

# 10k

## Individuals worldwide used the app to monitor their drinking

The program encourages users to experience “a world of better choices,  
fewer hangovers and unforgettable Sunday mornings.”



# Scientific Impact

## Bi-national study examines effects of family conflict on adolescent depressed mood

Understanding and preventing adolescent substance use and misuse goes beyond what drugs young people use, and how often. Other important factors include gender, age, family and social contexts, and personal psychological health. CYSAR staff member Associate Professor Adrian Kelly conducted a longitudinal study examining the role of family conflict on depressed mood in collaboration with staff at Boys Town, University of Washington, Murdoch Children's Research Institute, Australian Catholic University, and Deakin University 1,942 13-year-old participants were recruited in Washington, USA and Victoria, Australia and followed up at ages 14 and 15. Results indicated that family conflict at age 14 partially predicted changes in depressed mood at age 15 and that adolescent depressed mood increased subsequent family conflict, while family conflict increased later adolescent depressed mood. The study highlights the problematic cyclic effects of parent-adolescent conflict. Family support is vital in ensuring that young people feel supported and are able to ask questions about substance use. The results of this study can highlight the need for family-oriented intervention approaches to prevent youth substance use.

**CYSAR Member:**  
Associate Professor Adrian Kelly

# 1,942

participants were studied



It was determined that family conflict at age 14 predicts depressed mood at age 15

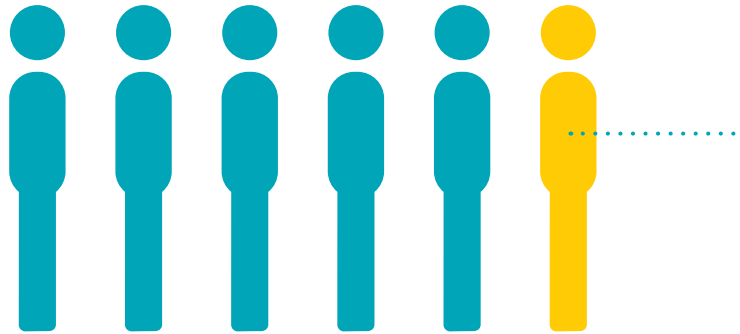
## Using population sampling data to understand trends in alcohol and drug use

The Australian Institute of Health and Welfare (AIHW) conducts the National Drug Strategy Household Drug Survey every three years. The survey asks a sample of Australians, selected to represent the Australian population about their health and wellbeing, their alcohol and drug use, and their attitudes towards drug use and government policy regarding, for example, the regulation and taxation of alcohol and tobacco. Each survey has data for approximately 20,000 Australians, and has been collected since 1998. CYSAR staff have been able to use these survey data to address questions such as: Are there differences between rural and urban adolescent alcohol use, and are these differences influenced by parental drinking? Has tobacco uptake and cigarette smoking changed among young people from 1998 to 2015? Are young people using more, or less marijuana than previous years, and is its use related to poorer mental and physical health? This work has been published in peer reviewed journals, and presented at the [Society for Mental Health Research Conference](#).

**CYSAR Members:** Dr Gary Chan, Dr Catherine Quinn, Megan Weier, Professor Wayne Hall, Associate Professor Leanne Hides, Professor Jason Connor, Associate Professor Adrian Kelly, Dr Matthew Gullo, Professor Rosa Alati

ADOLESCENTS  
LIVING IN RURAL  
AREAS ARE MORE  
THAN **2 TIMES AS**  
**LIKELY TO OBTAIN**  
**ALCOHOL FROM**  
THEIR PARENTS  
AS ADOLESCENTS  
LIVING IN URBAN  
AREAS.





In 2013, one in six Australians aged 12 or older had consumed 11 or more alcohol drinks in a single session



## Research exposure at national conference

Presenting work at academic conferences is vital in establishing new collaborations and promoting the Centre's work while also gaining expert peer feedback. The Society for Mental Health Research (SMHR), formerly known as the Australasian Society for Psychiatric Research, holds an annual conference that highlights and celebrates multidisciplinary approaches and methodologies to understand the mind and mental health conditions. In 2014, the national conference was held in Brisbane, and CYSAR staff were well represented in individual presentations, symposiums, and poster sessions.

Postdoctoral Fellows Dr Gary Chan and Dr Catherine Quinn, and Senior Research Assistant Megan Weier presented a symposium focusing on trends in adolescent use of alcohol, tobacco, cannabis, and polydrug use, using National Drug Strategy Household Survey data spanning 15 years. PhD candidate Charmaine Jensen presented her work surveying pharmaceutical cognitive enhancement use among university students in a poster. Senior research fellows Professor Jason Connor, Associate Professor Leanne Hides, and associate member Professor David Kavanagh spoke about innovations in the treatment of alcohol misuse.

**CYSAR Members:** Dr Gary Chan, Dr Catherine Quinn, Megan Weier, Charmaine Jensen, Professor Wayne Hall, Professor Jason Connor, Associate Professor Leanne Hides, Associate Professor Adrian Kelly

## High-impact *Lancet* seminar

Alcohol use disorders are characterised by repeated and compulsive alcohol use, and potentially a physiological dependence on alcohol. In 2013, one in six Australians aged 12 or older had consumed 11 or more alcohol drinks in a single session – one in fifteen had done so in the previous month. The rates of the disorder are most prevalent during young adulthood, as young people gain easier and legal access to alcohol, however most dangerous drinking patterns stop as the young person approaches the age of 30. However, for those that do continue to experience an alcohol use disorder, only 15% will receive treatment. In an invited “state-of-the-art” seminar published in high impact medical journal *The Lancet*, CYSAR's Professor Jason Connor and Professor Wayne Hall, with Professor Paul Haber, Medical Director, Royal Prince Alfred Hospital Drug Health Services, Sydney, New South Wales, reviewed the available interventions available to individuals who seek treatment. Sustained abstinence from alcohol is the ultimate goal of treatment for those with more serious alcohol problems.

Professors Connor, Haber and Hall noted that this can be achieved with effective, evidence driven behavioural and pharmacological treatments. As many of these approaches have equivalent efficacy, the seminar advocates engaging patients in one of these treatments, rather than advocating a specific treatment. They argued that more research, both in the clinical and applied areas of alcohol use disorders, should prioritise diagnosing and treating patients who experience alcohol use disorders alongside other mental or drug use disorders. *The Lancet* is considered one of the most prestigious medical journals, and is well respected in the medical and research community. By highlighting the current gaps in treatment and research, this seminar helps to advocate for better treatment for those who experience ongoing issues with alcohol.

**CYSAR Members:** Professor Jason Connor, Professor Wayne Hall

# Media Impact

1,250

University students were interviewed  
online and face-to-face



The study explores the motivations, side-effects,  
and effectiveness of using PCE

## Prevalence of pharmaceuticals for studying over-enhanced

PhD Student Charmaine Jensen is exploring the extent to which Australian university students are using prescription stimulants for pharmaceutical cognitive enhancement (PCE), or pharmaceutical substances to improve their focus, alertness, memory, and mood. PCEs includes pharmaceuticals such as Adderall, which are prescribed to improve the attention and memory of individuals with ADHD, but are reportedly also being used by students without ADHD to improve their attention and working memory.

Since 2013, Ms Jensen has recruited over 1,250 university students in both online surveys and face-to-face interviews exploring the motivations, side-effects, and effectiveness of using PCEs to help with study effectiveness, stress, and coping. She has found that a very low proportion of respondents (less than 2 percent) report using any form of PCE, despite media portrayals that such use is common and increasing among university students. Ms Jensen's work has received considerable [media attention](#).

CYSAR Member: Charmaine Jensen





24,443 Downloads

## Radio National talks about Your Brain on Drugs – Brisbane Writers Festival

The Brisbane Writer's Festival featured an ABC Radio National broadcast segment during this annual September event. RN presenter Paul Barclay, from the program *Big Ideas* hosted the hour-long program entitled 'Your Brain on Drugs', with guests Kate Holden, author; Marc Lewis, neuroscientist and professor of developmental psychology and author; and CYSAR Director Professor Wayne Hall. The program discussed the concept of addiction as a 'brain disease'; the culture of drug use and addiction; and the varying journeys drug addicted individuals can take to recovery. The program was live broadcasted nationally and also attended by members of the public. Professor Hall was able to add his experience and expertise in drug policy, neuroethics, and epidemiology to the discussion of personal experiences by Kate and Marc.

[Listen to the program here.](#)

**CYSAR Member:** Professor Wayne Hall

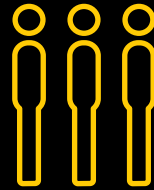
## Cannabis paper highest downloaded paper of 2015

CYSAR Director, Professor Wayne Hall's 2013 paper, *What has research over the past two decades revealed about the adverse health effects of recreational cannabis use?* was widely read and discussed after it was published online in October 2014 and in print in January 2015. The findings were featured in media outlets such as *Forbes* and *Science Daily*. At the end of 2015, *Addiction*, the top journal in the addiction and substance use field, reported that Professor Hall's paper had been downloaded 24,443 times. The next most downloaded paper was accessed 11,266 times. Professor Hall's paper was cited 66 times in the same year that it was released. It is proving to be an important and valuable addition to research on cannabis use and most likely contributed to his invitation to advise WHO on the topic.

**CYSAR Member:** Professor Wayne Hall

SECTION 3

# PEOPLE



# Staff Profiles



## Wayne Hall, *Director*

Wayne Hall is Professor and Inaugural Director of the Centre for Youth Substance Abuse Research at the University of Queensland (January 2014-) and a Visiting Professor at the National Addiction Centre, Kings College London (2009-); the London School of Hygiene and Tropical Medicine (2010); and the National Drug and Alcohol Research Centre, UNSW.

He was formerly an NHMRC Australia Fellow in addiction neuroethics at the University of Queensland Centre for Clinical Research and the Queensland Brain Institute, UQ (2009-2015); Professor of Public Health Policy in the School of Population Health (2005-2010); Director of the Office of Public Policy and Ethics at the Institute for Molecular Bioscience (2001-2005) at the University of Queensland; and Director of the National Drug and Alcohol Research Centre, UNSW (1994-2001).

He has advised the World Health Organization on: the health effects of cannabis use; the effectiveness of drug substitution treatment; the scientific quality of the Swiss heroin trials; the contribution of illicit drug use to the global burden of disease; and the ethical implications of genetic and neuroscience research on addiction.

Email [w.hall@uq.edu.au](mailto:w.hall@uq.edu.au)



## Leanne Hides, *Deputy Director*

Leanne is an ARC Future Fellow and clinical psychologist with expertise in the assessment and treatment of primary and co-occurring substance use disorders in young people.

**Her main areas of research interest include the efficacy of early interventions for primary and comorbid substance misuse, including the development of web- and mobile phone-based interventions.**

As Deputy Director of CYSAR, Leanne manages the QUT arm of the Centre and is currently leading two NHMRC projects.

Email [leanne.hides@qut.edu.au](mailto:leanne.hides@qut.edu.au)



## Rosa Alati

Rosa is an NHMRC Career Development Fellow (Level 2) with a background in Indigenous health research and the life course epidemiology of alcohol and mental health disorders. Since the award of her PhD in 2004, she has made significant contributions to the fields of maternal substance use and offspring outcomes and cognate aspects of developmental and life course epidemiology. Her research interests range from methodological issues in longitudinal studies, to the developmental origin of health, mental health and addictions. She has published on the impact of maternal alcohol use on offspring cognition and alcohol use, birth weight on depression and prenatal factors for neuro-development. She has an international reputation in these fields. She is a visiting professor at Oxford and Bologna Universities.

**In 2008, Rosa won the Australian 2008 National Drug and Alcohol Award for 'Excellence in Research' in recognition of her long term contribution to the field of substance use research.**

**Rosa has received national and international competitive grants of up to \$10 million to pursue her research. She is a principal investigator of the Mater University Study of Pregnancy (MUSP) and other large epidemiological studies, to investigate causal pathways to substance use and mental health outcomes in populations.**

One international study is the highly regarded ALSPAC study based in Bristol (UK), where upon she studies the effects of prenatal alcohol consumption on child neuro-developmental growth. Other studies are the 'PASSPORT' study of prisoners and the 'CATS' study of pubertal transitions. Other areas of current investigation include fetal influences on the development of alcohol and mental health disorders and persistence of alcohol use problems in adulthood.

Email [r.alati@sph.uq.edu.au](mailto:r.alati@sph.uq.edu.au)



## Gary Chan

Gary is a UQ Early Career Research Fellow. Gary joined CYSAR in 2010 as a PhD student with Associate Professor Adrian Kelly as his primary supervisor.

**Gary has a background in both psychology and statistics, and has a strong desire to make a meaningful contribution in preventing problematic and risky drinking during adolescence.**

His PhD project focused on the developmental trajectories of alcohol use, and examined how risk and protective factors in family, peers and school contributed to the initiation and escalation of alcohol use.

In 2014, following the awarding of his PhD Dr Chan was appointed as a Postdoctoral Research fellow in CYSAR. His current projects focus on the epidemiology of polydrug use, and its development over the course of adolescence and young adulthood.

Email [c.chan4@uq.edu.au](mailto:c.chan4@uq.edu.au)



## Jason Connor

Jason is a clinical and health psychologist and an NHMRC Career Development Fellow. His research areas include psychological, pharmacological and genetic factors contributing to the etiology and effective treatment of addiction. He also has an interest in alcohol prevention which has led to a large scale ARC-funded randomised controlled trial (RCT).

**This Griffith University led trial is delivering an effective social marketing intervention to over 2,500 secondary school students aged 13-14.**

Other recent research projects include youth polydrug use, web-based interventions, addiction epidemiology, and development of addiction assessment and measurement tools. His research has been supported by NHMRC and ARC funding since 2007. Jason also holds appointments in the Schools of Medicine and Psychology (UQ) and Queensland Health.

Email [jason.connor@uq.edu.au](mailto:jason.connor@uq.edu.au)



## Matthew Gullo

Matthew is a Senior Research Fellow and Clinical Psychologist who conducts research on impulsivity and substance use. His research focuses on the cognitive and neuropsychological mechanisms that convey risk for substance abuse and how they can best be targeted in treatment. Recently, Matthew has been leading research that is investigating the application of the first human laboratory model of impulsive drinking in adolescents, to delineate key therapeutic mechanisms in cognitive-behavioural treatments. The model helps identify better ways to target early intervention and prevention efforts. Matthew is supported by an NHMRC Early Career Fellowship (Tier 2, Clinical). He maintains his clinical practice as a Visiting Senior Clinical Psychologist at the Alcohol and Drug Assessment Unit, Princess Alexandra Hospital, and holds an Honorary Research Fellowship at the School of Psychology at The University of Queensland. Matthew has collaborations and partnerships with international organisations such as Yale University (USA), University of Liverpool (UK), Goldsmiths College (UK), and Plymouth University (UK).

Email [m.gullo@uq.edu.au](mailto:m.gullo@uq.edu.au)



## Adrian Kelly

Adrian is a clinical psychologist with expertise in the development, prevention and treatment of youth substance abuse and related problems. His primary interest is in how family interactions and emotional climate contribute to and protect young people from alcohol and drug-related harm.

Adrian is also examining how the characteristics of communities, schools and families interact to predict substance use experimentation. Adrian has received approximately \$4million in first or senior authored nationally competitive research grants, including several Australian Research Council (ARC) Discovery Projects, National Health & Medical Research Council (NHMRC) Projects, and NHMRC Fellowship funding (Career Development Award). His ARC funded research programs highlight key windows of risk for the development of substance use, and the role of parents and family environments in protecting children through high-risk transitions.

In 2013, Adrian was awarded Joint Winner of the prize for Excellence in Research at the National Drug and Alcohol Awards.

Email [a.kelly@uq.edu.au](mailto:a.kelly@uq.edu.au)



## Catherine Quinn

Catherine Quinn is a Postdoctoral Research Fellow at the Centre for Youth Substance Abuse Research at Queensland University of Technology. Catherine recently completed her Ph.D. in Psychology at Macquarie University, where she received the Macquarie University Research Excellence Scholarship.

Her PhD focused on two social cognitive processes (moral disengagement and anticipated social outcomes) and how they relate to adolescents' engagement in underage drinking and experience of alcohol-related harm.

Catherine also recently completed her Clinical Masters in psychology. Through her clinical training Catherine worked with younger and older adults who have abused alcohol and other drugs at St John of God Hospital.

She also worked in community health placements and acute adolescent units with high-risk youth, who were often disengaged from school, depressed, and engaging in risky behaviours including self-harming and substance misuse.

Past experiences include working as a Youth Officer at Juniperina Juvenile Justice Centre and working at Ltyentye Apurte Community Education Centre, Northern Territory, re-engaging a group of young aboriginal girls in education. Catherine is also actively involved in the Mitchell Youth Leadership Forum, an annual forum for student leadership groups. In addition to building leadership skills, this forum provides mediation between the students and key school staff, enhancing communication and advocating for student ideas on ways to improve their school environment.

Email [c6.quinn@qut.edu.au](mailto:c6.quinn@qut.edu.au)



## Megan Weier

Megan is a senior research assistant working at the Centre under the primary supervision of Professor Hall. She has a background in psychology, and is trained in both quantitative and qualitative research methods. Her involvement with the Centre to date has included large-scale epidemiology research on cannabis use in Australian young people using the National Drug Strategy Household Survey; conducting qualitative analysis of the experience of e-cigarette users, family members of addicted individuals, and interviews with addicted individuals themselves; and has been responsible for the management of the production and editing of the annual report and website content.

Megan is also currently completing her PhD through UQ School of Psychology, focusing on modern transitions into and understandings of adulthood.

Email [m.weier1@uq.edu.au](mailto:m.weier1@uq.edu.au)



## Sarah Yeates

Sarah is a senior research assistant and executive assistant to the director at the Centre. Sarah's background in Library and Information Science assists in the publication and dissemination of research findings from the Centre.

Sarah is also a PhD candidate through UQ School of Communication and Arts, focusing on alcohol promotion and policy.

Email [s.yeates@uq.edu.au](mailto:s.yeates@uq.edu.au)

# Students



## Jason Coates

Jason is enrolled in a combined Masters (Clinical Psychology) and PhD at The University of Queensland. Jason's PhD research looks at psychological mechanisms which perpetuate alcohol dependence and may consequently be targeted by psychological interventions.

The project focuses on mechanisms such as craving, impulsivity, and expectancies related to alcohol consumption.

In his PhD, Jason is collaborating with the Alcohol and Drug Assessment Unit at the Princess Alexandra Hospital where he is able to collect information pertaining to these mechanisms and how they relate to treatment outcome. Ultimately the intention of Jason's work is to facilitate personally tailored interventions for the patient, based on the most influential psychological mechanisms maintaining alcohol misuse.

**CYSAR Advisors:** Professor Jason Connor, Dr Matthew Gullo, Dr Genevieve Dingle

Email [j.coates@uq.edu.au](mailto:j.coates@uq.edu.au)



## Daniel Demant

Daniel has been a PhD candidate with Queensland University of Technology (QUT) since September 2014 and holds a CYSAR PhD Scholarship. Daniel possesses an undergraduate degree in Social Work and Applied Social Sciences as well as a Master in Public Health with a major in Epidemiology and Research Methods.

Daniel's PhD project, 'Substance Use among Lesbians, Bisexuals, and Gays: The Influence of Social Identities and Community Attitudes,' focuses on substance use among lesbian, gay, bisexual and transgender (LGBT) people with a focus on social identities and communities.

Daniel will conduct three studies for his PhD. In the first study, he will undertake a thematic analysis of qualitative interviews with LGBT adolescents and young adults, to gain a deeper insight into interactions between different social identities and crowd affiliations and substance use and abuse in LGBT young people.

His second study will focus on stakeholders of the LGBT community such as health care workers, LGBT venue owners/operators and political activists to identify the potential relationship between the different subgroups of the community and their influence on substance use.

These studies will be used to develop research hypotheses for a third quantitative study in the form of an online questionnaire. Daniel's study will also compare the frequency of use of 17 different types of drugs between LGBT young people with their heterosexual counterparts worldwide using data from the Global Drug Survey. Daniel also works as a research assistant and tutor for QUT.

**CYSAR Advisor:**  
Associate Professor Leanne Hides

Email [d.demant@qut.edu.au](mailto:d.demant@qut.edu.au)



## Charmaine Jensen

The term 'pharmaceutical cognitive enhancement (PCE)' is generally defined as the non-medical use of prescription stimulants (e.g. Ritalin) by healthy people, in an attempt to enhance alertness, focus, memory, mood and other cognitive functions. Charmaine is doing her PhD as part of an ARC-funded research study that aims to describe the extent and nature of PCE among Australian university students. The studies that make up this research project are designed to provide an understanding of how common PCE is in student populations, who engages in it, with what frequency, in what circumstances, and with what effects. Three studies will be conducted in this project in an attempt to reduce the dearth of knowledge regarding PCE amongst Australian tertiary students and to understand the patterns and consequences of their use, their attitudes towards PCE and motivations for use.

**CYSAR Advisor:** Professor Wayne Hall

Email [c.jensen2@uq.edu.au](mailto:c.jensen2@uq.edu.au)



## Kiri Patton

Kiri Patton is undertaking a concurrent Masters of Clinical Psychology and PhD program at The University of Queensland which she started in 2014. Her PhD furthers previous work by the Centre on the impact of impulsivity and alcohol-related cognitions in youth on their current and future alcohol use.

**As a component of her PhD, Kiri will develop and implement a school-based intervention targeting these factors and evaluate potential effects on adolescent alcohol misuse.**

Kiri hopes that the combination of her clinical and research skills will help her PhD project to facilitate positive real-world outcomes for teenagers by reducing possible alcohol-related harm.

**CYSAR Advisors:** Dr Matthew Gullo and Professor Jason Connor

Email [k.patton@uq.edu.au](mailto:k.patton@uq.edu.au)



## Timothy Piatkowski

Timothy Piatkowski completed a Bachelor of Exercise Science, and Bachelor of Applied Science (Honours) at Queensland University of Technology. He has been involved in teaching and unit coordination work across various schools for several years. Additionally, he has worked in a number of research assistant roles for several years - including neurological disease based research, muscular injury and rehabilitation research, and alcohol and drug abuse treatment projects.

**This has eventuated in publications, conference presentations, continued education program (CEP) workshop management, and specialised rehabilitation training and research with sporting teams ranging from Queensland Reds, to Carlton Football Club, and the Brisbane Roar.**

He is currently undertaking a PhD entitled: Understanding what motivates young men's lifestyle choices for enhancing their appearance including steroid use.

**CYSAR Advisor:**  
Associate Professor Leanne Hides

Email [t.piatkowski@qut.edu.au](mailto:t.piatkowski@qut.edu.au)



## Nina Pocuca

Nina is a PhD candidate at Queensland University of Technology (QUT) and holds an Australian Postgraduate Award and CYSAR top-up PhD scholarship. Nina previously completed a Bachelor of Behavioural Science (Honours Psychology) at QUT. Nina's PhD project 'Examination of Personality Substance Use Risk Profiles and Alcohol Use Trajectories from Early to Late Adolescence' focuses on the role of personality and other demographic and environmental factors on alcohol uptake and trajectories, throughout adolescence. This PhD comprises of four studies.

**Study one will cross-sectionally examine the moderating effect of environmental factors on the relationship between personality and alcohol use, and explore the relative influence of anxiety sensitivity vs. social anxiety proneness on alcohol use, in early adolescence.**

The second study will utilise self-report and behavioural assessments in order to create a new personality risk profile scale for substance use in young people. The third study will examine the reliability and validity of the scale developed in study two, within an adolescent cohort. Finally, study four will utilise longitudinal data to examine the effects of the interaction between personality and environmental variables on alcohol use trajectories throughout adolescence. Nina is currently also employed as a Research Assistant and Tutor at QUT.

**CYSAR Advisor:**  
Associate Professor Leanne Hides

Email [n.pocuca@qut.edu.au](mailto:n.pocuca@qut.edu.au)

# Honorary, Affiliate and Adjunct Staff

## Honorary staff

Professor John B Saunders

[View Profile](#)

Dr Natalie Loxton

[View Profile](#)

Dr Angela M. White

[View Profile](#)

## Affiliate staff

Associate Professor Annemaree Carroll

[View Profile](#)

Dr Genevieve Dingle

[View Profile](#)

Dr Louise McCuaig

[View Profile](#)

## Adjunct staff

Associate Professor Gerald Feeney

[View Profile](#)

Ms Sophie Morson

[View Profile](#)

Ms Caroline Salom

[View Profile](#)

Mr John Kelly

[View Profile](#)

Dr Andrew Wood

# Advisory Board

Professor Bruce Abernethy

[View Profile](#)

Professor Wayne Hall

Associate Professor Leanne Hides

Professor Christina Lee

[View Profile](#)

Dr Nicholas Carah

[View Profile](#)

Ms Carrie Fowlie

[View Profile](#)

Professor Lyn Griffiths

[View Profile](#)

Professor David Kavanagh

[View Profile](#)

Professor Doune Macdonald

[View Profile](#)

Associate Professor Brett McDermott

[View Profile](#)

Professor Ross Young

[View Profile](#)



# Major Partners and Collaborators

beyondblue The National Depression Initiative Advisory Council, New Access Program

Boystown/Kids Helpline

Boystown Fresh Start, Goodna

ChaplainWatch

Columbia University

Department of Psychiatry & Biobehavioral Sciences, UCLA

Drug and Alcohol Brief Intervention Team (DABIT), RBWH

Durham University

Flinders University

Griffith Business School, Griffith University

Griffith University

HADS, RBWH

Inspire Australia

Institute of Psychiatry, National Addiction Centre, Kings College London

Lives Lived Well, Logan and Gold Coast therapeutic Communities

Melbourne University

National Drug and Alcohol Research Centre (NDARC)

National Cannabis Prevention and Information Centre (NCPIC)

Orange Medical Aboriginal Service

Orygen Youth Health Research Centre,

University of Melbourne

Plymouth University, United Kingdom

Princess Alexandra Hospital, Brisbane

Queensland University of Technology

QUT Business School, Queensland University of Technology

Reclink Australia

Royal Brisbane Hospital, Brisbane

Salvation Army Homeless Services

School of Hard Knocks Institute (Choir for adults experiencing mental illness, addiction and homelessness)

School of Psychology (Faculty of Science and Technology), Plymouth University, UK.

School of Psychology, Deakin University

School of Social Work, University of Washington, USA

Turning Point Alcohol & Drug Centre, Monash University, Melbourne

University of Birmingham

University of Liverpool, United Kingdom

University of Manchester

University of New South Wales

University of Newcastle

Young and Well Cooperative Research Centre (Young and Well CRC)

SECTION 4

# APPENDICIES



# Peer-reviewed Publications

## CYSAR staff are noted in bold.

1. Abajobir A, Maravilla J, **Alati R**, Najman JM. A systematic review and meta-analysis of the association between unintended pregnancy and perinatal depression. *Journal of Affective Disorders* 2015; 192: 56-63.
2. **Alati R**, Betts KS, Williams GM, Najman JM, Zalbahar N, Mamun A. Generational increase in obesity among young women: a prospective analysis of mother-daughter dyads. *International Journal of Obesity* 2015; August 17: 10.1038/ijo.2015.153.
3. Baker PR, Francis DP, **Demant D**, Doyle J, Dobbins M. An interactive method for engaging the public health workforce with evidence. *Journal of Public Health (Oxford)* 2015; 37: 557-60.
4. Baranoff J, Hanrahan SJ, **Connor JP**. The roles of acceptance and catastrophizing in rehabilitation following anterior cruciate ligament reconstruction. *Journal of Science and Medicine in Sport* 2015; 18: 250-4.
5. Baranoff J, Hanrahan SJ, Burke AL, **Connor JP**. Changes in acceptance in a low-intensity, group-based acceptance and commitment therapy (ACT) chronic pain intervention. *International Journal of Behavioral Medicine* 2015; July 2: 10.1007/s12529-015-9496-9.
6. Betts KS, McIlwraith F, Dietze P, Whittaker E, Burns L, Cogger S, **Alati R**. Can differences in the type, nature or amount of polysubstance use explain the increased risk of non-fatal overdose among psychologically distressed people who inject drugs? *Drug and Alcohol Dependence* 2015; 154: 76-84.
7. Betts KS, Salom CL, Williams GM, Najman JM, **Alati R**. Associations between self-reported symptoms of prenatal maternal infection and post-traumatic stress disorder in offspring: evidence from a prospective birth cohort study. *Journal of Affective Disorders* 2015; 175: 241-7.
8. Betts KS, Williams GM, Najman JM, **Alati R**. The relationship between maternal depressive, anxious, and stress symptoms during pregnancy and adult offspring behavioral and emotional problems. *Depression and Anxiety* 2015; 32: 82-90.
9. Betts KS, Williams GM, Najman JM, **Alati R**. Predicting spectrums of adult mania, psychosis and depression by prospectively ascertained childhood neurodevelopment. *Journal of Psychiatric Research* 2015; October 19: 10.1016/j.jpsychires.2015.10.013.
10. Butler K, Day C, Dietze P, Bruno R, **Alati R**, Burns L. The potential reach of opioid substitution settings to deliver HCV care to people who inject drugs in Australia. *Journal of Substance Abuse Treatment* 2015; 58: 90-4.
11. Campbell G, Bruno R, Darke S, Shand F, **Hall WD**, Farrell M, Degenhardt L. Prevalence and correlates of suicidal thoughts and suicide attempts in people prescribed pharmaceutical opioids for chronic pain. *Clinical Journal of Pain* 2015; August 20: 10.1097/ajp.000000000000283.
12. Campbell G, Nielsen S, Bruno R, Lintzeris N, Cohen M, **Hall WD**, Larance B, Mattick RP, Degenhardt L. The Pain and Opioids IN Treatment study: characteristics of a cohort using opioids to manage chronic non-cancer pain. *Pain* 2015; 156: 231-42.
13. Campbell G, Nielsen S, Bruno R, Lintzeris N, Cohen M, **Hall WD**, Larance B, Mattick RP, Degenhardt L. Charakteristika der Opioiddauermedikation. *Journal Club Schmerzmedizin* 2015; 4: 160.
14. Campbell G, Nielsen S, Larance B, Bruno R, Mattick R, **Hall WD**, Lintzeris N, Cohen M, Smith K, Degenhardt L. Pharmaceutical opioid use and dependence among people living with chronic pain: associations observed within the Pain and Opioids in Treatment (POINT) Cohort. *Pain Medicine* 2015; 16: 1745-58.
15. Capra C, Kavanagh DJ, **Hides L**, Scott JG. Subtypes of psychotic-like experiences are differentially associated with suicidal ideation, plans and attempts in young adults. *Psychiatry Research* 2015; 228: 894-8.
16. Capra C, Kavanagh DJ, **Hides L**, Scott JG. Current CAPE-15: a measure of recent psychotic-like experiences and associated distress. *Early Intervention in Psychiatry* 2015; May 12: 10.1111/eip.12245.
17. Carah N, Meurk C, **Hall WD**. Profiling Hello Sunday Morning: who are the participants? *International Journal of Drug Policy* 2015; 26: 214-16.
18. Carter A, Hendrikse J, Lee N, Yucel M, Verdejo-Garcia A, Andrews Z, **Hall WD**. The neurobiology of "food addiction" and its implications for obesity treatment and policy. *Annual Review of Nutrition* 2015 in press; 36: 10.1146/annurev-nutr-071715-50909.
19. Carter A, Liddle J, **Hall WD**, Chenery H. Mobile phones in research and treatment: ethical guidelines and future directions. *JMIR mHealth and uHealth* 2015; 3: e95.
20. **Chan GCK**, **Kelly AB**, **Connor JP**, **Hall WD**, Young RMCD, Toumbourou JW, Williams J. Regional versus urban differences in teenage alcohol use: does parental disapproval account for these differences? *Australian Journal of Rural Health* 2015; April 8: 10.1111/ajr.12177.
21. **Chan GCK**, **Kelly AB**, **Quinn C**, **Hides L**, Williams JW. Does gender moderate the relationship between polydrug use and sexual risk taking among Australian secondary school students under 16? *Drug and Alcohol Review* 2015 in press.

22. **Chan GCK**, Leung J, **Quinn C**, **Kelly AB**, **Connor JP**, **Weier M**, **Hall WD**. Rural and urban differences in adolescent alcohol use, alcohol supply, and parental drinking. *Journal of Rural Health* 2015; October 8: 10.1111/jrh.12151.
23. **Connor JP**, Haber PS, **Hall WD**. Seminar: Alcohol use disorders. *Lancet* 2015; September 3: 10.1016/s0140-6736(15)00122-1.
24. **Connor JP**, **Hall WD**. Alcohol burden in low-income and middle-income countries. *Lancet* 2015; 386: 1922-24.
25. Darvell, M., **Kavanagh, DJ**, & Connolly, J. (2015). A qualitative exploration of Internet-based treatment for comorbid depression and alcohol misuse. *Internet Interventions*, 2, 174-182.
26. Degenhardt L, Bruno R, Lintzeris N, **Hall WD**, Nielsen S, Larance B, Cohen M, Campbell G. Agreement between definitions of pharmaceutical opioid use disorders and dependence in people taking opioids for chronic non-cancer pain (POINT): a cohort study. *Lancet Psychiatry* 2015; 2: 314-22.
27. Degenhardt L, Larney S, **Chan GCK**, Dobbins T, **Weier M**,..., **Hall, WD**, McKetin R. Estimating the number of regular and dependent methamphetamine users in Australia, 2002-2014. *Medical Journal of Australia* 2015 in press.
28. Degenhardt L, Larney S, Kimber J, Farrell M, **Hall WD**. Excess mortality among opioid-using patients treated with oral naltrexone in Australia. *Drug and Alcohol Review* 2015; 34: 90-96.
29. Degenhardt L, Lintzeris N, Campbell G, Bruno R, Cohen M, Farrell M, **Hall WD**. Experience of adjunctive cannabis use for chronic non-cancer pain: findings from the Pain and Opioids IN Treatment (POINT) study. *Drug and Alcohol Dependence* 2015; 147: 144-50.
30. Degenhardt L, Romaniuk H, Coffey C, **Hall WD**, Swift W, Carlin JB, O'Loughlin C, Patton GC. Does the social context of early alcohol use affect risky drinking in adolescents? Prospective cohort study. *BMC Public Health* 2015; 15: 1137.
31. Dickson JM, **Gullo MJ**. The role of brief CBT in the treatment of anxiety and depression for young adults at a UK university: a pilot prospective audit study. *Cognitive Behaviour Therapist* 2015; 8: 10.1017/s1754470x15000240.
32. Dietrich T, Rundle-Thiele S, Leo C, **Connor JP**. One size (never) fits all: segment differences observed following a school-based alcohol social marketing program. *Journal of School Health* 2015; 85: 251-9.
33. Dietrich T, Rundle-Thiele S, Schuster L, **Connor JP**. Co-designing social marketing programs. *Journal of Social Marketing* 2015; In Press.
34. Dietrich T, Rundle-Thiele S, Schuster L, **Connor JP**. A systematic literature review of alcohol education programmes in middle and high school settings (2000-2014). *Health Education* 2015 in press; 10.1108/HE-03-2014-0042.
35. Dietrich T, Rundle-Thiele S, Schuster L, Drennan J, Russell-Bennett R, Leo C, **Gullo MJ**, **Connor JP**. Differential segmentation responses to an alcohol social marketing program. *Addictive Behaviors* 2015; 49: 68-77.
36. Douglas H, **Hall WD**, Gartner C. E-cigarettes and the law in Australia. *Australian Family Physician* 2015; 44: 415-8.
37. Duhig M, Patterson S, Connell M, Foley S, Capra C, Dark F, Gordon A, Singh S, **Hides L**, McGrath JJ, Scott J. The prevalence and correlates of childhood trauma in patients with early psychosis. *Australian and New Zealand Journal of Psychiatry* 2015; 49: 651-9.
38. Farrell M, **Hall WD**. Heroin-assisted treatment: has a controversial treatment come of age? *British Journal of Psychiatry* 2015; 207: 3-4.
39. Fergusson DM, **Hall WD**, Boden JM, Horwood LJ. Rethinking cigarette smoking, cannabis use, and psychosis. *Lancet Psychiatry* 2015; 2: 581-2.
40. Ferro MA, Boyle MH, **Alati R**, Scott JG, Dingle K. Maternal psychological distress mediates the relationship between asthma and physician visits in a population-based sample of adolescents. *Journal of Asthma* 2015; 52: 170-5.
41. Ferro MA, Van Lieshout RJ, Scott JG, **Alati R**, Mamun AA, Dingle K. Condition-specific associations of symptoms of depression and anxiety in adolescents and young adults with asthma and food allergy. *Journal of Asthma Research* 2015; November 5: 10.3109/02770903.2015.1104694.
42. Ford, P, Tran, P, Cockburn, N, Keen, B, **Kavanagh, DJ**, & Gartner, C. (2015). Survey of dental clinic patients: Smoking and preferences for cessation support. *Australian Dental Journal*. DOI: 10.1111/adj.12345
43. Forlini C, **Hall WD**. The is and ought of the ethics of neuroenhancement: mind the gap. *Frontiers in Psychology* 2015 in press; 10.3389/fpsyg.2015.01998.
44. Fraser D, **Weier M**, Keane H, Gartner C. Vapers' perspectives on electronic cigarette regulation in Australia. *International Journal of Drug Policy* 2015; 26: 589-94.
45. Gartner C, **Hall WD**. Tobacco harm reduction in people with serious mental illnesses. *Lancet Psychiatry* 2015; 2: 485-87.
46. Gartner C, **Hall WD**. A licence to vape: is it time to trial of a nicotine licensing scheme to allow Australian adults controlled access to electronic cigarettes devices and refill solutions containing nicotine? *International Journal of Drug Policy* 2015; 26: 548-53.
47. Grace FC, Meurk CS, Head BW, **Hall WD**, Carstensen G, Harris MG, Whiteford HA. An analysis of policy levers used to implement mental health reform in Australia 1992-2012. *BMC Health Services Research* 2015; 15: 479.
48. **Gullo MJ**. A clinician's quick guide of evidence-based approaches: substance use disorders. *Clinical Psychologist (Australian Psychological Society)* 2015; 19: 59-61.
49. **Hall WD**. What has research over the past two decades revealed about the adverse health effects of recreational cannabis use? *Addiction* 2015; 110: 19-35.

50. **Hall WD**. U.S. policy responses to calls for the medical use of cannabis. *Yale Journal of Biology and Medicine* 2015; 88: 257-64.
51. **Hall WD**. Getting to grips with the cannabis problem: the evolving contributions and impact of Griffith Edwards. *Addiction* 2015; 110 Suppl 2: 36-9.
52. **Hall WD**. Challenges in minimizing the adverse effects of cannabis use after legalization. *Social Psychiatry and Psychiatric Epidemiology* 2015; 50: 1013-5.
53. **Hall WD**, Carter A, Forlini C. The brain disease model of addiction: is it supported by the evidence and has it delivered on its promises? *Lancet Psychiatry* 2015; 2: 105-10.
54. **Hall WD**, Carter A, Forlini C. The brain disease model of addiction: challenging or reinforcing stigma?-Authors' reply. *Lancet Psychiatry* 2015; 2: 292.
55. **Hall WD**, Carter A, Forlini C. Brain disease model of addiction: misplaced priorities? *Lancet Psychiatry* 2015; 2: 867.
56. **Hall WD**, Degenhardt L. High potency cannabis. *BMJ* 2015; 350: h1205.
57. **Hall WD**, Gartner C, Forlini C. Nuances in the ethical regulation of electronic nicotine delivery systems. *Addiction* 2015; 110: 1074-5.
58. **Hall WD**, Gartner C, Forlini C. Ethical issues raised by a ban on the sale of electronic nicotine devices. *Addiction* 2015; 10.1111/add.12898: April 5.
59. **Hall WD**, Morley K. Possible causes and consequences of reduced perceptions of the risks of using cannabis. *Clinical Toxicology* 2015; 53: 141-42.
60. **Hall WD**, Patton G, Stockings E, **Weier M**, Lynskey M, Morley K, Degenhardt L. Why young people's substance use matters for global health. *Lancet Psychiatry* 2015 submitted.
61. **Hall WD**, **Weier M**. Assessing the public health impacts of legalizing recreational cannabis use in the USA. *Clinical Pharmacology and Therapeutics* 2015; 97: 607-15.
62. **Hides L**, Dawe S, McKetin R, Kavanagh DJ, Young RMCD, Teesson M, Saunders JB. Primary and substance-induced psychotic disorders in methamphetamine users. *Psychiatry Research* 2015; 226: 91-6.
63. **Hides L**, Limbong J, Vallmuur K, Barker R, Daghli M, Young RMCD. Alcohol-related emergency department injury presentations in Queensland adolescents and young adults over a 13-year period. *Drug and Alcohol Review* 2015; 34: 177-84.
64. Hoban B, Larance B, Gisev N, Nielsen S, Cohen M, Bruno R, Shand F, Lintzeris N, **Hall WD**, Farrell M, Degenhardt L. The use of paracetamol (acetaminophen) among a community sample of people with chronic non-cancer pain prescribed opioids. *International Journal of Clinical Practice* 2015; 69: 1366-76.
65. Hollingworth SA, Gray PD, **Hall WD**, Najman JM. Opioid analgesic prescribing in Australia: a focus on gender and age. *Pharmacoepidemiology and Drug Safety* 2015; 24: 628-36.
66. Jayaraj, R, Whitty, M, Thomas, M, **Kavanagh, DJ**, Palmer, D, Thomson, V, Griffin, C, Mayo, L, d'Abbs, P, & Nagel, T. (2013). Prevention of Alcohol-Related Crime and Trauma (PACT): brief interventions in routine care pathway – a study protocol. *BMC Public Health*, 13(1): 49. doi:10.1186/1471-2458-13-49
67. **Kelly AB**, **Chan GCK**, Mason WA, Williams JW. The relationship between psychological distress and adolescent polydrug use. *Psychology of Addictive Behaviors* 2015; 29: 787-93.
68. **Kelly AB**, Evans-Whipp TJ, Smith R, **Chan GCK**, Toumbourou JW, Patton GC, Hemphill SA, **Hall WD**, Catalano RF. A longitudinal study of the association of adolescent polydrug use, alcohol use and high school non-completion. *Addiction* 2015; 110: 627-35.
69. **Kelly AB**, Mason WA, Chmelka MB, Herrenkohl TI, Kim MJ, Patton GC, Hemphill SA, Toumbourou JW, Catalano RF. Depressed mood during early to middle adolescence: a bi-national longitudinal study of the unique impact of family conflict. *Journal of Youth and Adolescence* 2015 submitted; 10.1007/s10964-016-0433-2.
70. Lai FY, Anuj S, Bruno R, Carter S, Gartner C, **Hall WD**, Kirkbride KP, Mueller JF, O'Brien JW, Prichard J, Thai PK, Ort C. Systematic and day-to-day effects of chemical-derived population estimates on wastewater-based drug epidemiology. *Environmental Science & Technology* 2015; 49: 999-1008.
71. Lau W, Peterson CC, Attwood T, Garnett MS, **Kelly AB**. Parents on the autism continuum: self-perceived autistic traits and parenting efficacy. *Research in Autism Spectrum Disorders* 2015 submitted; February 16.
72. Lawford BR, Barnes M, Voisey J, Morris CP, Nyst P, Heslop K, Noble EP, Young RMCD, **Connor JP**. Dopamine 2 receptor schizophrenia risk variants are associated with increased fasting blood glucose. *Canadian Journal of Psychiatry* 2015 accepted.
73. Mani M, Kavanagh DJ, **Hides L**, Stoyanov SR. Review and evaluation of mindfulness-based iPhone apps. *JMIR mHealth and uHealth* 2015; 3: e82.
74. May, J, **Kavanagh, DJ**, & Andrade, J. (2015). The Elaborated Intrusion Theory of Desire: A 10-year retrospective and implications for addiction treatments. *Addictive Behaviors*, 44, 29-34. doi: 10.1016/j.addbeh.2014.09.016
75. McGrath JJ, **Alati R**, Clavarino A, Williams GM, Bor W, Najman JM, Connell M, Scott JG. Age at first tobacco use and risk of subsequent psychosis-related outcomes: a birth cohort study. *Australian and New Zealand Journal of Psychiatry* 2015; May 19: 10.1177/0004867415587341.
76. McKetin R, Dawe S, Burns RA, **Hides L**, Kavanagh DJ, Teesson M, Young RMCD, Voce A, Saunders JB. The profile of psychiatric symptoms exacerbated by methamphetamine use. *Drug and Alcohol Dependence* 2015 in press.
77. Meier MH, **Hall WD**, Caspi A, Belsky DW, Cerda M, Harrington HL, Houts R, Poulton R, Moffitt TE. Which adolescents develop persistent substance dependence in adulthood? Using population-representative longitudinal data to inform universal risk assessment. *Psychological Medicine* 2015: 1-13.

78. Meurk C, Fraser D, **Weier M**, Lucke J, Carter A, **Hall WD**. Assessing the place of neurobiological explanations in accounts of a family member's addiction. *Drug and Alcohol Review* 2015; August 31: 10.1111/dar.12318.
79. Meurk C, Leung J, **Hall WD**, Head BW, Whiteford H. Establishing and governing e-mental health care in Australia: a systematic review of challenges and a call for policy-focused research. *Journal of Medical Internet Research* 2015 in press; 18: e10.
80. Meurk C, Whiteford H, Head B, **Hall WD**, Carah N. Media and evidence-informed policy development: the case of mental health in Australia. *Contemporary Social Science* 2015; 10: 160-70.
81. Mewton L, Kessler RC, Slade T, Hobbs MJ, Brownhill L, Birrell L, Tonks Z, Teesson M, Newton N, Chapman C, Allsop S, **Hides L**, McBride N, Andrews G. The psychometric properties of the Kessler Psychological Distress Scale (K6) in a general population sample of adolescents. *Psychological Assessment* 2015; November 30: 10.1037/pas0000239.
82. Morphett K, Carter A, **Hall WD**, Gartner C. A qualitative study of smoker's views on brain-based explanations of tobacco dependence. *International Journal of Drug Policy* 2015; December 19: 10.1016/j.drugpo.2015.12.011.
83. Morphett K, Partridge B, Gartner C, Carter A, **Hall WD**. Why don't smokers want help to quit? A qualitative study of smokers' attitudes towards assisted vs. unassisted quitting. *International Journal of Environmental Research and Public Health* 2015; 12: 6591-607.
84. Najman JM, **Alati R**, Bor W, Clavarino A, Mamun A, McGrath JJ, McIntyre D, O'Callaghan M, Scott J, Shuttlewood G, Williams GM, Wray N. Cohort Profile Update: The Mater-University of Queensland Study of Pregnancy (MUSP). *International Journal of Epidemiology* 2015; 44: 78-78f.
85. Nielsen S, Campbell G, Peacock A, Smith K, Bruno R, **Hall WD**, Cohen M, Degenhardt L. Health service utilisation by people living with chronic non-cancer pain: findings from the Pain and Opioids IN Treatment (POINT) study. *Australian Health Review* 2015; November 25: 10.1071/ah15047.
86. Nielsen S, Lintzeris N, Bruno R, Campbell G, Larance B, **Hall WD**, Hoban B, Cohen ML, Degenhardt L. Benzodiazepine use among chronic pain patients prescribed opioids: associations with pain, physical and mental health, and health service utilization. *Pain Medicine* 2015; 16: 356-66.
87. Papinczak ZE, Dingle GA, Stoyanov SR, **Hides L**, Zelenko O. Young people's uses of music for well-being. *Journal of Youth Studies* 2015; 18: 1119-34.
88. Partridge B, **Hall WD**. Repeated head injuries in Australia's collision sports highlight ethical and evidential gaps in concussion management policies. *Neuroethics* 2015; 8: 39-45.
89. Pegum N, **Connor JP**, Young RMCD, Feeney GF. Psychosocial functioning in patients with alcohol-related liver disease post liver transplantation. *Addictive Behaviors* 2015; 45c: 70-73.
90. Pocuca N, **Hides L**, Zelenko O, Quek L-H, Stoyanov S, Tulloch K, Johnson D, Tjondronegoro D, Kavanagh DJ. Initial prototype testing of Ray's Night Out: a new mobile app targeting risky drinking in young people. *Computers in Human Behavior* 2015; August 24: 10.1016/j.chb.2015.07.033.
91. **Quinn C**, Bussey K. Adolescents' anticipated social outcomes for drinking alcohol and being drunk. *Addiction Research & Theory* 2015; 23: 253-64.
92. **Quinn C**, Bussey K. Moral disengagement, anticipated social outcomes and adolescents' alcohol use: parallel latent growth curve analyses. *Journal of Youth and Adolescence* 2015; 44: 1854-70.
93. **Quinn C**, Bussey K. The role of moral disengagement in underage drinking and heavy episodic drinking. *Substance Use & Misuse* 2015; 50: 1437-48.
94. Rebgetz S, **Hides L**, **Kavanagh DJ**. Systematic analysis of changes in cannabis use among participants in control conditions of randomised controlled trials. *Addictive Behaviors Reports* 2015; 1: 76-80.
95. Rebgetz S, **Hides L**, **Kavanagh DJ**, Choudhary A. Natural recovery from cannabis use in people with psychosis: a qualitative study. *Journal of Dual Diagnosis* 2015; 11: 179-83.
96. Rebgetz S, **Kavanagh DJ**, **Hides L**. Can exploring natural recovery from substance misuse in psychosis assist with treatment? A review of current research. *Addictive Behaviors* 2015; 46: 106-12.
97. Riggall K, Forlini C, Carter A, **Hall WD**, **Weier M**, Partridge B, Meinzer M. Researchers' perspectives on scientific and ethical issues with transcranial direct current stimulation: an international survey. *Scientific Reports* 2015; 5: 10618.
98. Roxburgh A, **Hall WD**, Burns L, Pilgrim J, Saar E, Nielsen S, Degenhardt L. Trends and characteristics of accidental and intentional codeine overdose deaths in Australia. *Medical Journal of Australia* 2015; 203: 299.
99. Rundle-Thiele S, Schuster L, Dietrich T, Russell-Bennett R, Drennan J, Leo C, **Connor JP**. Maintaining or changing a drinking behavior? GOKA's short-term outcomes. *Journal of Business Research* 2015; 68: 2155-63.
100. Salom CL, Betts KS, Williams GM, Najman JM, **Alati R**. Predictors of comorbid polysubstance use and mental health disorders in young adults-a latent class analysis. *Addiction* 2015; August 26: 10.1111/add.13058.
101. Salom CL, **Kelly AB**, **Alati R**, Williams GM, Patton GC, Williams JW. Individual, school-related and family characteristics distinguish co-occurrence of drinking and depressive symptoms in very young adolescents. *Drug and Alcohol Review* 2015; June 29: 10.1111/dar.12303.
102. Salom CL, Williams GM, Najman JM, **Alati R**. Substance use and mental health disorders are linked to different forms of intimate partner violence victimisation. *Drug and Alcohol Dependence* 2015; 151: 121-7.

103. Salom CL, Williams GM, Najman JM, **Alati R**. Familial factors associated with development of alcohol and mental health comorbidity. *Addiction* 2015; 110: 248-57.
104. Sara GE, Large MM, Matheson SL, Burgess PM, Malhi GS, Whiteford HA, **Hall WD**. Stimulant use disorders in people with psychosis: a meta-analysis of rate and factors affecting variation. *Australian and New Zealand Journal of Psychiatry* 2015; 49: 106-17.
105. Spriggens L, **Hides L**. Patterns of cannabis use, psychotic-like experiences and personality styles in young cannabis users. *Schizophrenia Research* 2015; 165: 3-8.
106. Stafford E, **Hides L, Kavanagh DJ**. The acceptability, usability and short-term outcomes of Get Real: A web-based program for psychotic-like experiences (PLEs). *Internet Interventions* 2015; 2: 266-71.
107. Stoyanov SR, **Hides L, Kavanagh DJ**, Zelenko O, Tjondronegoro D, Mani M. Mobile app rating scale: a new tool for assessing the quality of health mobile apps. *JMIR mHealth and uHealth* 2015; 3: e27.
108. Sutherland R, Sindicich N, Entwistle G, Whittaker E, Peacock A, Matthews A, Bruno R, **Alati R**, Burns L. Tobacco and e-cigarette use amongst illicit drug users in Australia. *Drug and Alcohol Dependence* 2015; November 26: 10.1016/j.drugalcdep.2015.10.035.
109. Thai PK, Lai FY, Edirisinghe M, **Hall WD**, Bruno R, O'Brien JW, Prichard J, Kirkbride KP, Mueller JF. Monitoring temporal changes in use of two cathinones in a large urban catchment in Queensland, Australia. *Science of the Total Environment* 2015; 545-546: 250-55.
110. Thomas EG, Spittal MJ, Heffernan EB, Taxman FS, **Alati R**, Kinner SA. Trajectories of psychological distress after prison release: implications for mental health service need in ex-prisoners. *Psychological Medicine* 2015; November 9: 10.1017/S0033291715002123.
111. Thomas HJ, **Chan GCK**, Scott JG, **Connor JP, Kelly AB**, Williams J. Association of different forms of bullying victimisation with adolescents' psychological distress and reduced emotional wellbeing. *Australian and New Zealand Journal of Psychiatry* 2015; August 21: 10.1177/0004867415600076.
112. Thomas HJ, **Connor JP**, Scott JG. Integrating traditional bullying and cyberbullying: challenges of definition and measurement in adolescents -- a review. *Educational Psychology Review* 2015; 27: 135-52.
113. Thorberg FA, Young RMCD, Sullivan KA, Lyvers M, Hurst C, **Connor JP**, Tyssen R, London ED, Noble EP, Feeney G. A longitudinal mediational study on the stability of alexithymia among alcohol-dependent outpatients in cognitive-behavioral therapy. *Psychology of Addictive Behaviors* 2015 accepted.
114. Tjondronegoro D, Drennan J, **Kavanagh DJ**, Zhao EJ, White AM, Previte J, **Connor JP**, Fry ML. Designing a mobile social tool that moderates drinking. *Pervasive Computing, IEEE* 2015; 14: 62-69.
115. **Weier M**, Lee C. Stagnant or successful, carefree or anxious? Australian university students' goals and beliefs about adulthood and their current wellbeing. *Australian Psychologist* 2015 in press.
116. **Weier M**, Lee C. How do Australian university students understand adulthood? *Australian Psychologist* 2015; 50: 157-67.
117. West R, Marsden J, Darke S, Humphreys K, Miller P, **Hall WD**, Petry N. Vote of thanks to Professor Tom Babor. *Addiction* 2015; 110: 1060.
118. Whitty, M, Nagel, T, Jararaj, R, & **Kavanagh, DJ**, (2016). Development and evaluation of training in culturally specific screening and brief intervention for patients with alcohol-related injuries. *Australian Journal of Rural Health, 24 (1)*, 9–15. DOI: 10.1111/ajr.12195
119. Whitty, M, Nagel, T, Ward, L, Jayaraj, R, **Kavanagh, DJ**, (2015). Evaluation of an intervention for Indigenous and non-Indigenous patients with alcohol-related injuries: Results of a mixed methods study. *Australian and New Zealand Journal of Public Health, 39 (3)*, 216–221. doi: 10.1111/1753-6405.12375
120. Zimmerman D, Ownsworth T, O'Donovan A, Roberts J, **Gullo MJ**. High-functioning autism spectrum disorders in adulthood: investigating factors that influence psychosocial outcomes. *Australian Clinical Psychologist* 2015; 1: 30-43.
121. Zimmerman DL, Ownsworth T, O'Donovan A, **Gullo MJ**, Roberts J. Independence of hot and cold executive function deficits in high-functioning adults with autism spectrum disorder. *Frontiers in Human Neuroscience* 2015 submitted; September 28: 10.3389/fnhum.2016.00024.

# Book Chapters and Monographs

## CYSAR staff are noted in bold.

1. Carter A, **Hall WD**. What is addiction neuroethics? In: Clausen J, Levy N, editors. *Handbook of neuroethics* (pp.995-98). Dordrecht, Netherlands: Springer; 2015.
2. Carter A, **Hall WD**. Ethical issues in addiction medicine and bioscience. In: Haber P, Day C, Farrell M, editors. *Addiction medicine: principles and practice* (pp.55-63). Melbourne: IP Communications; 2015.
3. Carter A, Mosley P, Forlini C, **Hall WD**. Ethical, social and clinical challenges in using deep brain stimulation to treat addiction and other impulsive and compulsive disorders. In: Sturma D, Fuchs M, editors. *Jahrbuch für Wissenschaft und Ethik* (pp.163-88). Berlin: Walter de Gruyter GmbH; 2015.
4. **Connor JP**, Feeney GFX, **Kelly AB**, Saunders JB. Polysubstance abuse. In: Wolff K, White J, Karch S, editors. *Handbook of drug and alcohol studies*. London: Sage; 2015 accepted.
5. Degenhardt L, Gartner C, **Hall WD**. The epidemiology of tobacco, alcohol and illicit drug use and their contribution to the burden of disease. In: Haber P, Day C, Farrell M, editors. *Addiction medicine: principles and practice* (pp.8-21). Melbourne: IP Communications; 2015.
6. Degenhardt L, **Hall WD**. Drugs and their impact on public health. In: Brownstein H, editor. *Wiley handbook on drugs and society* (pp.300-19). New York: Wiley and Sons; 2015.
7. Degenhardt L, **Hall WD**, **Weier M**. Illicit drug use. In: Quah S, editor. *International encyclopedia of public health* 2nd ed; 2015.
8. Feeney GFX, **Connor JP**. Polysubstance use. In: Saunders JB, Conigrave KM, Latt NC, Nutt DJ, Marshall EJ, Ling W, *et al.*, editors. *Addiction medicine* 2nd ed. Oxford, UK: Oxford University Press; 2015 in press.
9. **Hall WD**, Carter A. Are addicted individuals responsible for their behaviour? In: Glannon W, editor. *Free will and the brain: neuroscientific, philosophical, and legal perspectives* (pp.146-67). Cambridge, UK: Cambridge University Press; 2015.
10. **Hall WD**, Carter A, Yucel M. Ethical issues in the neuroprediction of addiction risk and treatment response. In: Clausen J, Levy N, editors. *Handbook of neuroethics* (pp.1028-44). Dordrecht, Netherlands: Springer; 2015.
11. Hu X, Gallagher M, Loveday W, **Connor JP**, Wiles J. Detecting anomalies in controlled drug prescription data using probabilistic models. In: Chalup SK, Blair AD, Randall M, editors. *Artificial life and computational intelligence* (pp.337-49). Springer; 2015.
12. **Jensen C**, Partridge B, Forlini C, Lucke J, **Hall WD**. Cognitive enhancement down under: an Australian perspective. In: Dubljevic V, editor. *Cognitive enhancement: ethical and policy issues in international perspective* (pp.147-58). New York: Oxford University Press; 2015.
13. Kavanagh D, Connolly J, White A, **Kelly AB**, Parr J. Low-intensity Cognitive-Behavioural Therapies by Mail (M-CBT). In: Bennett-Levy J, Richards D, Farrand P, Christensen H, Griffiths K, Kavanagh DJ, *et al.*, editors. *The Oxford guide to low intensity CBT interventions*. Oxford: Oxford University Press; in press.
14. Leung R, Kennedy V, **Kelly AB**, Toumbourou J, Hutchinson D. The family's role in preventing alcohol harms in young people. Alcohol and Drug Foundation; 2015 in press.
15. Saunders JB, **Connor JP**, Feeney GFX. Gamma-hydroxybutyric Acid (GHB) and analogues Gamma-butyrolactone (GBL) 1,4-butanediol (1,4-BD). In: Wolff K, White J, Karch S, editors. *Handbook of drug and alcohol studies*. California: Sage; 2015 accepted.
16. Thomas H, **Kelly AB**, Toumbourou JW. Prevention of alcohol related harm for children and adolescents. In: Fitzgerald J, Byrne G, editors. *Psychosocial dimensions of medicine* (pp.291-304). Lane Cove, NSW: IP Communications; 2015.



# Conference Presentations

## CYSAR staff are noted in bold.

1. Baranoff, J., Hanrahan, S., Burke, A., & **Connor, J. P.** (2015). ACT for Chronic Pain Group Program at the Royal Adelaide Hospital. Paper presented at the Data Blitz: Pain Special Interest Group Preconference of the 13th World Conference of the Association for Contextual Behavioral Science, Berlin, Germany.
2. Baranoff, J., Hanrahan, S., & **Connor, J. P.** (2015). Poster presentation: Experiential avoidance and acceptance in sport injury rehabilitation. Paper presented at the 50th Annual Conference of the Australian Psychological Society - the Golden Jubilee Conference, Gold Coast, Qld.
3. Birrell, L., Newton, N., Slade, T., Chapman, C., Andrews, G., Mewton, L., **Hides, L.**, . . . Teesson, M. (2015). Mental health and substance use prevention in schools: The Climate Schools Combined Study. Paper presented at the Paying attention to prevention and early intervention: innovative approaches to tackle alcohol and other drug use and mental health problems in young people. Symposium conducted at Society for Mental Health Research (SMHR) Conference 2015: Building a healthier future, Brisbane, Qld. Symposium 5 paper retrieved from <http://www.smhr2015.com.au/wp-content/uploads/SMHR-PROGRAM-2015.pdf>
4. Campbell, G., Nielsen, S., Larance, B., Bruno, R., Mattick, R., **Hall, W. D.**, . . . Degenhardt, L. (2015). Pharmaceutical opioid use and dependence among people living with chronic pain: associations observed within the pain and opioids in treatment cohort. *Drug and Alcohol Dependence*, 156, e35.
5. Carter, A., & **Hall, W.** (2015). Clinical, ethical and legal implications of impulse control disorders in Parkinson's disease. *Australian and New Zealand Journal of Psychiatry*, 49, 11.
6. **Chan, G. C. K., Kelly, A. B., Quinn, C., Weier, M., Hides, L., Gullo, M. J., . . . Hall, W.** (2015). Changing patterns of alcohol use and parental supply among young Australians from 2001 to 2013. Paper presented at the Trends and patterns of substance use among young people in Australia 1996-2013. Symposium conducted at the Society for Mental Health Research (SMHR) Conference 2015: Building a healthier future, Brisbane, Qld.
7. **Chan, G. C. K., Leung, J., Quinn, C., Kelly, A. B., Connor, J. P., Weier, M., & Hall, W. D.** (2015). Poster presentation: Alcohol misuse in rural Australia: an investigation of rural-urban differences in adolescent alcohol use, alcohol supply and parental drinking. Paper presented at the Society for Mental Health Research (SMHR) Conference 2015: Building a healthier future, Brisbane, Qld.
8. **Chan, G. C. K., Quinn, C., & Weier, M.** (2015). Trends and patterns of substance use among young people in Australia 1996-2013. Paper presented at the Trends and patterns of substance use among young people in Australia 1996-2013. Symposium conducted at the Society for Mental Health Research (SMHR) Conference 2015: Building a healthier future, Brisbane, Qld.
9. **Coates, J. M., Connor, J. P., Gullo, M. J.,** Kavanagh, D. J., Young, R. M., Dingle, G. A., & Feeney, G. F. X. (2015). Assessing the clinical utility of a brief alcohol craving questionnaire in an alcohol dependent population. Paper presented at the 50th Annual Conference of the Australian Psychological Society - the Golden Jubilee Conference, Gold Coast, Qld.
10. **Connor, J. P.** (2015a). Alcohol use disorders. Paper presented at the Behavioral Health: Advancing Health, Wellness & Recovery: the Florida Alcohol and Drug Abuse Association and Florida Council for Community Mental Health annual conference, Orlando, USA.
11. **Connor, J. P.** (2015b). Chair, Substance Use Disorder stream. Paper presented at the 50th Annual Conference of the Australian Psychological Society - the Golden Jubilee Conference, Gold Coast, Qld.
12. **Connor, J. P.** (2015c). What is the future of alcohol use disorder treatment? Paper presented at the Invited Keynote Address presented at Addiction Research & Therapy: International Conference on Addictions, Orlando, USA. Invited Keynote.
13. **Connor, J. P.,** Feeney, G. F. X., Young, R. M., **Gullo, M. J.,** Kavanagh, D. J., Symons, M., & Saunders, J. B. (2015). Where to from now: alcohol use disorder treatment. Paper presented at the Innovations in the treatment of alcohol misuse. Symposium conducted at Society for Mental Health Research (SMHR) Conference 2015: Building a healthier future, Brisbane, Qld.
14. **Connor, J. P., Gullo, M. J.,** Young, R. M., Kavanagh, D. J., & Feeney, G. F. X. (2015). Outcome expectancies and self-efficacy are key psychological constructs in understanding cannabis use and dependence. Paper presented at the Australian Psychology Society (APS) Health Psychology Conference, Sydney, NSW.
15. **Connor, J. P.,** Symons, M., **Gullo, M. J.,** Young, R. M., **Coates, J. M.,** & Feeney, G. F. X. (2015). Beyond CBT: what is the future of alcohol use disorder treatment? Paper presented at the 50th Annual Conference of the Australian Psychological Society - the Golden Jubilee Conference, Gold Coast, Qld.
16. **Connor, J. P.,** Symons, M., **Gullo, M. J.,** Young, R. M., & Feeney, G. F. X. (2015). Alcohol use disorder treatment 2020: is the future more than CBT? Paper presented at the Australian Psychology Society (APS) Health Psychology Conference, Sydney, NSW.

17. Degenhardt, L., Bruno, R., Lintzeris, N., **Hall, W. D.**, Nielsen, S., Larance, B., . . . Campbell, G. (2015). Examining DSM and ICD definitions of pharmaceutical opioid dependence in people taking opioids for chronic pain: findings from the pain and opioids in treatment study. *Drug and Alcohol Dependence*, 156, e55.
18. **Demant, D.**, **Hides, L.**, Kavanagh, D., & White, K. (2015). Poster presentation: Substance use disparities among sexual minority adolescents and young adults. Paper presented at the 'IHBI Inspires 2015' Institute of Health and Biomedical Innovation Postgraduate Student Conference, Brisbane, Qld.
19. Dietrich, T., Rundle-Thiele, S. R., Schuster, L., Drennan, J., Russell-Bennett, R., Leo, C., & **Connor, J. P.** (2015). Segmenting Australian high school students utilising a TwoStep cluster analysis: differential effects following the EduCATE program. Paper presented at the Paper presented at the Academy of Marketing Science World Marketing Congress, Bari, Italy.
20. **Hall, W. D.** (2015a). The brain disease model of addiction: assessing its validity, utility and implications for public policy towards the treatment and prevention of addiction. Paper presented at the Invited lecture, School of Population Health, University of Auckland, Auckland, NZ.
21. **Hall, W. D.** (2015b). Cannabis and mental health. Paper presented at the Invited presentation at the Forensic Mental Health Seminars, Biala Centre, Brisbane, Qld.
22. **Hall, W. D.** (2015c). Ethical and legal issues in using waste water to monitor illicit drug use in the population. Paper presented at the Invited paper presented at the Testing the Waters Conference, Ascona, Switzerland.
23. **Hall, W. D.** (2015d). Ethical and technical issues in the neuroprediction of addiction risk. Paper presented at the Invited presentation at the Centre for Brain Research, University of Auckland, Auckland, NZ.
24. **Hall, W. D.** (2015e). Ethical issues on e-cigarette policy and regulation. Paper presented at the Invited Keynote Address presented at Electronic cigarettes: opportunity or threat? Symposium hosted by the Centre of Addiction Research and the NZ Tobacco Control Research Tūranga, Owen Glen Business School, University of Auckland, Auckland, NZ.
25. **Hall, W. D.** (2015f). How should we monitor cannabis use and cannabis-related harm after cannabis is legalised for recreational use? Paper presented at the Invited paper presented at the European Addiction Conference, Lisbon, Portugal.
26. **Hall, W. D.** (2015g). How should we respond to calls to allow the medical use of cannabinoids and cannabis? Paper presented at the Centre for Youth Substance Abuse Research Seminar, Brisbane, Qld.
27. **Hall, W. D.** (2015h). How should we respond to calls to legalise the medical use of cannabis? Paper presented at the Invited public lecture, Population Health Strategic Research Centre, Deakin University, Melbourne, Vic.
28. **Hall, W. D.** (2015i). How should we respond to calls to legalise the medical use of cannabis? Paper presented at the Invited paper presented at the Australian Drug and Alcohol Strategy Conference, Brisbane, Qld.
29. **Hall, W. D.** (2015j). Obesity and addiction: is it useful for public health to understand obesity as a type of addiction to certain foods? Paper presented at the Invited lecture, Charles Perkins Institute, University of Sydney, Sydney, NSW.
30. **Hall, W. D.** (2015k). The potential harms of cannabis addiction. Paper presented at the Invited paper presented at the European Addiction Conference, Lisbon, Portugal.
31. **Hall, W. D.** (2015l). The public health implications of cannabis policy experiments in the USA. Paper presented at the Invited presentation to the Value for Money, Alcohol, Drugs and Tobacco Division, Public Health England, London, UK.
32. **Hall, W. D.** (2015m). The public health implications of cannabis policy experiments in the USA. Paper presented at the Invited lecture at the National Addiction Centre, Kings College London, London, UK.
33. **Hall, W. D.** (2015n). Should we use stimulant drugs to make ourselves smarter? Paper presented at the Invited public lecture, Health Sciences, University of Auckland, Auckland, NZ.
34. **Hall, W. D.** (2015o). Testing the waters: using waste water to monitor illicit drug use in the population. Paper presented at the Invited presentation, University of Queensland Water Symposium, Brisbane, Qld.
35. **Hall, W. D.** (2015p). Testing the waters: using waste water to monitor illicit drug use in the population. Paper presented at the Invited paper presented at the Applied Research in Crime and Justice Conference, Sydney, NSW.
36. **Hall, W. D.** (2015q). Tobacco harm reduction and e-cigarettes. Paper presented at the Invited Keynote Address presented at Electronic cigarettes: opportunity or threat? Symposium hosted by the Centre of Addiction Research and the NZ Tobacco Control Research Tūranga, Owen Glen Business School, University of Auckland, Auckland, NZ.
37. **Hall, W. D.** (2015r). What are the adverse health effects of cannabis? Paper presented at the Invited lecture to staff, Central Alcohol and Drug Services, Pitman House, Point Chevalier.
38. **Hall, W. D.** (2015s). What are the adverse health effects of cannabis? Paper presented at the Invited Address, UN Office on Drugs and Crime and the World Health Organization Scientific Consultation on the Prevention of Drug Use and the Treatment of Drug Use Disorders, Vienna, Austria.
39. **Hall, W. D.** (2015t). What may we learn from cannabis policy experiments in the USA? Paper presented at the Invited seminar, London School of Hygiene and Tropical Medicine, London, UK.

40. **Hall, W. D.** (2015u). What may we learn from US cannabis policy experiments? Paper presented at the Centre for Youth Substance Abuse Research Public Lecture, Brisbane, Qld.
41. **Hall, W. D.** (2015v). What may we learn from US policy experiments that legalise cannabis for recreational use? Paper presented at the Invited Lecture, Global Leadership Lecture Series, University of Queensland, Brisbane, Qld.
42. **Hides, L.** (2015a). Brief intervention for problematic substance use among adolescents seeking mental health assistance: predictors of response and session module completion. Paper presented at the Symposium presentation at the 12th International Network on Brief Interventions for Alcohol & Other Drugs Conference (INEBRIA) Atlanta, USA.
43. **Hides, L.** (2015b). Improving treatment for youth substance use & comorbidity. Paper presented at the Invited Address presented at the Winter School in the Sun Conference, Brisbane, Qld.
44. **Hides, L.** (2015c). Ray's night out: a new iPhone app for reducing risky alcohol use in young people (Abstract of paper presented at Symposium: eHealth interventions for substance use: APSAD 2015 Conference, 8–11 November, Perth, Hides, L., Tait, R., Kavanagh, D. J., Young, R. McD (Chair), Cunningham, R. (Discussant)). *Drug and Alcohol Review*, 34(s1).
45. **Hides, L.** (2015). Shaping solutions: youth wellbeing & health. Paper presented at the Invited Panel Speaker at Future Fusion - The Confluence of Education and Health, Melbourne, Vic.
46. **Hides, L., Dawe, S., McKetin, R., Kavanagh, D. J., Young, R. M., Teesson, M., & Saunders, J. B.** (2015). Primary and substance-induced psychotic disorders in methamphetamine users. Paper presented at the Addiction Conference, Gold Coast, Qld.
47. **Hides, L., Kavanagh, D. K., Stoyanov, S., Cockshaw, W., Zelenko, O., & Tjondronegoro, D.** (2015). Ray's Night Out: A new iPhone app for reducing risky alcohol use in young people. Paper presented at the Innovations in the treatment of alcohol misuse. Symposium conducted at Society for Mental Health Research (SMHR) Conference 2015: Building a healthier future, Brisbane, Qld.
48. **Jensen, C., & Hall, W. D.** (2015). Poster presentation: Pharmaceutical cognitive enhancement among Australian university students. Paper presented at the Society for Mental Health Research (SMHR) Conference 2015: Building a healthier future.
49. Kerr, G., Muthalib, M., Pegoraro, R., Roeder, L., **Piatkowski, T., Stewart, I., & Smith, S.** (2015). Poster presentation: Functional neuroimaging of prefrontal cortex in Parkinson's disease using near infra-red spectroscopy: effects of cognitive task during seated and standing postures. Conference Abstract: XII International Conference on Cognitive Neuroscience (ICON-XII), Brisbane, Qld.
50. Knox, K., Rundle-Thiele, S., Dietrich, T., Drennan, J., Russell-Bennett, R., Leo, C., & **Connor, J. P.** (2015). Poster presentation: Fuelling drinking intentions? Parental and peer influence moderates teen binge drinking intentions. Paper presented at the Population Health Congress, Hobart, Tas.
51. Larance, B., Peacock, A., Campbell, G., Bruno, R., Lintzeris, N., Cohen, M., **Hall, W., . . . Degenhardt, L.** (2015). Sex differences in alcohol use disorders and risky drinking among chronic non-cancer pain patients receiving opioid therapy (Abstract of paper presented at the 2015 annual meeting of the College on Problems of Drug Dependence). *Drug and Alcohol Dependence*, 156, e122. <http://www.sciencedirect.com/science/article/pii/S0376871615007073>
52. Law, B., **Gullo, M. J.,** Daghli, M., Kavanagh, D. J., Feeney, G. F. X., Young, R. M., & **Connor, J. P.** (2015). Craving mediates stress in predicting lapse in alcohol dependence treatment. Paper presented at the 50th Annual Conference of the Australian Psychological Society - the Golden Jubilee Conference, Gold Coast, Qld.
53. May, J., Connolly, J., Kavanagh, D. J., **Connor, J. P., Gullo, M. J., & Andrade, J.** (2015). Poster presentation: How to measure desire. Paper presented at the International Convention of Psychological Science (ICPS), Amsterdam, The Netherlands.
54. Meurk, C., Leung, J., **Hall, W. D.,** Head, B., & Whiteford, H. (2015). Poster presentation: Implementing e-mental health services for depression and anxiety within the Australian mental health system. Paper presented at the Society for Mental Health Research (SMHR) Conference 2015: Building a healthier future.
55. Mosley, P. E., Marsh, R., Dissanayaka, N., Subramanian, H., Carter, A., **Hall, W. D., . . . Silburn, P.** (2015). Neuropsychiatric aspects of Parkinson's disease. *Australian and New Zealand Journal of Psychiatry*, 49, 10.
56. **Patton, K. A., Connor, J. P.,** Rundle-Thiele, S., Dietrich, T., Sheffield, J., & **Gullo, M. J.** (2015). Early adolescent drinking refusal self-efficacy and alcohol expectancies: associations with problem alcohol use. Paper presented at the Paper presented at the 50th Annual Conference of the Australian Psychological Society - the Golden Jubilee Conference, Gold Coast, Qld.
57. **Patton, K. A., Connor, J. P.,** Rundle-Thiele, S., Dietrich, T., Young, R. M., & **Gullo, M. J.** (2015). Drinking until you think you're popular: how do adolescents' beliefs about alcohol relate to problematic consumption? Paper presented at the Paper presented at the Inaugural Children's Health Queensland (CHQ) Research Day, Brisbane, Qld.
58. Phillips, C., Johnson, D., Wyeth, P., **Hides, L., & Klarkowski, M.** (2015, December 7-10). Redefining videogame reward types. Paper presented at the Proceedings of the Annual Meeting of the Australian Special Interest Group for Computer Human Interaction, Parkville, Vic.
59. Pocuca, N., **Hides, L.,** Zelenko, I., Quek, L., Stoyanov, S., Tulloch, K., . . . Kavanagh, D. J. (2015). The development of Ray's Night Out: an iPhone app for alcohol misuse in young people. Paper presented at the Innovations in the development, testing and dissemination of e-mental health programs. Symposium conducted at Society for Mental Health Research (SMHR) Conference 2015: Building a healthier future, Brisbane, Qld.

60. **Quinn, C.** (2015). Party time: alcohol and mental health: from adolescence to young adulthood. Paper presented at the Invited Presentation at the Australian Rotary Health Early Psychosis Symposium.
61. **Quinn, C., Chan, G. C. K., Weier, M., Hides, L., Kelly, A., Connor, J. P., & Hall, W.** (2015). Trends in tobacco use and quitting from 1998-2013: Australian nationally representative data. Paper presented at the Trends and patterns of substance use among young people in Australia 1996-2013. Symposium conducted at the Society for Mental Health Research (SMHR) Conference 2015: Building a healthier future, Brisbane, Qld.
62. **Quinn, C., & Hides, L.** (2015). What predicts the severity of alcohol use and related problems among young people presenting to emergency department or crisis support care? Abstract of paper presented at the 12th International Network on Brief Interventions for Alcohol & Other Drugs Conference (INEBRIA), Atlanta, USA, September. *Addiction Science & Clinical Practice*, 10(Suppl 2), O33.
63. **Quinn, C., Hides, L., & Bussey, K.** (2015). A longitudinal investigation of the relationship between filial self-efficacy, bullying and substance use. Paper presented at the 3rd International Conference on Youth Mental Health, Montreal, Canada.
64. **Quinn, C., Hides, L., Kavanagh, D., Copeland, J., & Norberg, M.** (2015). Comparison of two treatment groups of young alcohol and ecstasy users. Paper presented at the Paying attention to prevention and early intervention: innovative approaches to tackle alcohol and other drug use and mental health problems in young people. Symposium conducted at Society for Mental Health Research (SMHR) Conference 2015: Building a healthier future, Brisbane, Qld.
65. Riggall, K., Forlini, C., Carter, A., **Weier, M., Hall, W., & Meinzer, M.** (2015). Researchers' perspectives on scientific and ethical issues with transcranial direct current stimulation: an international survey (abstract of paper presented at the 1st International Brain Stimulation Conference March 2-4, Singapore). *Brain Stimulation: Basic, Translational, and Clinical Research in Neuromodulation*, 8(2), 360.
66. Roxburgh, A., Burns, L., **Hall, W. D., & Degenhardt, L.** (2015). The changing nature of opioid-related mortality in Australia. *Drug and Alcohol Dependence*, 156, e195.
67. Rundle-Thiele, S., Knox, K., Dietrich, T., Drennan, J., Russell-Bennet, R., Leo, C., & **Connor, J. P.** (2015). EduCATE: early long term follow-up results from a cluster randomized control trial. Paper presented at the Paper presented at the Innovation and Growth Strategies in Marketing: The 2015 ANZMAC Conference, Sydney, NSW.
68. Thai, P., Lai, F., O'Brien, J., Bruno, R., **Hall, W. D.,** Edirisinghe, M., . . . Mueller, J. (2015). Long-term monitoring of cathinone use using wastewater analysis in an urban catchment in South East Queensland (abstract of paper presented at APSAD 2015 Conference, 8-11 November 2015, Perth). *Drug and Alcohol Review*, 34(S1). doi:DOI: 10.1111/dar.12335
69. Thomas, H., **Connor, J. P., & Scott, J.** (2015a). The next generation of measuring school bullying. Paper presented at the International Bullying Prevention Conference, Denver, USA.
70. Thomas, H., **Connor, J. P., & Scott, J.** (2015b). The next generation of measuring school bullying. Paper presented at the 50th Annual Conference of the Australian Psychological Society - the Golden Jubilee Conference, Gold Coast, Qld.
71. Thomas, H., **Connor, J. P., & Scott, J.** (2015c). Poster presentation: Refining the measurement of bullying behaviours in adolescents. Paper presented at the International Youth Mental Health Conference, Montreal, Canada.
72. Thorberg, F. A., Young, R. M., Sullivan, K., Lyvers, M., **Connor, J. P.,** Noble, E. P., . . . Feeney, G. (2015). A longitudinal mediational study of the stability of alexithymia among alcohol treatment seekers. *Drug and Alcohol Dependence*, 156, e221.
73. Vella, K., Johnson, D., & **Hides, L.** (2015a, December 7-10). Indicators of wellbeing in recreational video game players. Paper presented at the Proceedings of the Annual Meeting of the Australian Special Interest Group for Computer Human Interaction, Parkville, Vic.
74. Vella, K., Johnson, D., & **Hides, L.** (2015b, October 3-7). Playing alone, playing with others: differences in player experience and indicators of wellbeing. Paper presented at the Proceedings of the 2015 Annual Symposium on Computer-Human Interaction in Play, London, UK.

# Grants New and Awarded in 2015

CYSAR staff are noted in bold.

<b>Alati</b>	2015-17	Into the thirties: Persistence and social consequences of risky drinking	ARC	Discovery Project	\$273,200
<b>Chan</b>	2016-19	Early Career Research Fellowship	UQ	Fellowship	\$168,000
Mills, Keddie, Carroll, Lingard, Mackinlay, Phillips, Lynch, Westoby, <b>Kelly</b> , Dobson, Tomaszewski	2016-17	Creating a more inclusive and cohesive society – education institutions engaging with community stakeholders	UQ	Faculty of Humanities and Social Sciences Strategic Research Funding Award: Collaborative Research Funding Award	\$100,000
Rundle-Thiele, Arli, Kubacki, <b>Connor, Gullo</b> , & Percy	2015-18	Changing Australian drinking: A comprehensive social marketing program	ARC	Linkage	\$134,493

# Continuing in 2015

CYSAR staff are noted in bold.

<b>Alati</b>	2011-15	Genes, biology, environment and the development of substance use and mental health disorders	NHMRC	Career Development Award	\$471,995
<b>Alati</b> (Queensland Principal Investigator)	Ongoing	Illicit Drug Reporting System (IDRS) and Ecstasy and Related Drugs Reporting System (EDRS)	Department of Health and Ageing	Government	\$120,000/year
<b>Connor</b> , on behalf of CYSAR	2013-17	Gift to the Centre for Youth Substance Abuse Research from Graeme Wood and Andrew Brice	UQ The University of Queensland Endowment Fund	Philanthropical Gift	\$2,000,180
<b>Connor</b>	2012-16	Revolutionising alcohol dependence treatment: targeting individual genetic and psychological risk through Clinical Decision Support Systems	NHMRC	Career Development Fellowship Level 2: Clinical	\$432,568
<b>Gullo</b>	2012-16	From the laboratory to the classroom: validation of an innovative laboratory model of adolescent impulsivity and alcohol use using a school-based randomised controlled trial	NHMRC	Early Career Fellowship TSP2: Clinical	\$341,049
<b>Hides</b>	2012-16	Promoting the positive mental health and well being of young Australians	ARC	Future Fellowship	\$599,966
<b>Hides</b> , Kavanagh, <b>Connor</b> , Daghish, Cotton, Barendregt, Young, <b>White</b>	2013-17	Reducing alcohol use and related harm in young people ['Brief telephone interventions']	NHMRC	Targeted Call for Mental Health Research	\$702,461
<b>Hides</b> , Kavanagh, Young, Shochet, Tjondronegoro, Johnson, Drennan	2011-16	e-Tools for wellbeing project, Etools for Wellbeing Project, Rays Night Out app & Keep it Real web-based program	Inspire Foundation and the Young and Well Cooperative Research Centre	Program Grant	\$2,400,000 (800,000 CYSAR)
<b>Hides</b> , Stain, Baker, Jackson, Lenroot, Paulik, McElduff, Wolfenden	2013-17	Social well-being and engaged living (SWEL) intervention for Australian youth at risk of mental health and other adverse outcomes	NHMRC	Targeted Call for Mental Health Research	\$1,305,235 (\$905,235 QUT)
<b>Kelly</b> , Young, <b>Connor</b> , Williams, Baker, Bush	2013-15	Very young adolescents and substance use: community and family vulnerabilities and healthy developmental transitions	ARC	Discovery Project	\$203,380

# CYSAR Co-investigators New or Awarded in 2015

CYSAR staff are noted in bold.

Forsyth, <b>Alati</b>	2015-17	Understanding asthma related mortality in ex-prisoners	Asthma Foundation of Australia	--	\$104,500
Carah, N., Meurk, C., <b>Hall, W., Hides, L., Kavanagh, D.,</b> Brown, J., Reale, M., <b>Weier, M.</b>	2015	Hello Sunday Morning: Designing an evaluation method	HSM	Hello Sunday Morning evaluation contract	\$50,000
Kavanagh, Graves, <b>Connor, Hides, Gullo,</b> Connolly, Andrade, May	2016-19	A new, low-cost e-health treatment for Alcohol Use Disorder using mental imagery	NHMRC	Project	\$895,000
Kavanagh, Hamilton, Marshall, Milgrom, Rowe, Fisher, Wittkowski, Scuffman, Davis, Walsh, Chang, <b>White, Hides,</b> Daniels	2012-15	Promoting perinatal mental health and wellbeing: development and evaluation of screening and intervention programs for both parents, using the Internet and text messages (SMS)	<i>beyondblue</i>	Grant	\$399,836
Mamun, <b>Alati</b>	2015-19	Generational and developmental pathways of childhood and adolescent obesity: A three generation cohort study	NHMRC	Project	\$1,232,041
May, <b>Connor</b>	2015	Travel award <b>Prof John May</b>	UQ	Travel Award	
Mueller, Thai, Gartner, Prichard, <b>Hall,</b> Lai, Jiang, Kirkbride, Bruno, Ort, Covaci, Carter, Lubman	2015	Estimating per capita use and release of chemicals by wastewater analysis	ARC	Linkage	\$603,798
Najman, <b>Alati</b>	2015-16	Linked lives: Antisocial behaviour across three generations	ARC	Discovery Project	\$441,400
Toumbourou, <b>Kelly,</b> Rowland, Williams, Kremer, Carter, Abraham	2015-19	Estimating the contribution of adolescent alcohol misuse prevention to the reduction of alcohol-related harm in Australia	NHMRC	Project	\$95,770

# CYSAR Co-investigators Continuing in 2015

CYSAR staff are noted in bold.

Cotton, McGorry, Mackinnon, Herrman, Gleeson, <b>Hides</b> , Foley	2013-18	Rates, patterns and predictors of long-term outcome in a treated first-episode psychosis cohort	NHMRC	Targeted Call for Mental Health Research	\$1,344,905
Gallagher, Wiles, <b>Connor</b> , Loveday, Ballantyne	2013-16	The development of automated advanced data analysis techniques for the detection of aberrant patterns of prescribing controlled drugs	ARC	Linkage Project; matching funds from Queensland Health	\$302,969
Mueller, Gaus, Sly, <b>Hall</b> , Keller, Hawker, Toms, Harden, Lewis, Kirkbride, Prichard, Bruno, Birch, Negri, Carter, Ponsonby, Martin, Zitny	2014-15	Microflow ultra high pressure liquid chromatography - high resolution mass spectrometry for chemical exposure monitoring	ARC	Linkage Infrastructure Equipment and Facilities	\$334,000
Patton, Allen, Sawyer, Olds, Degenhardt, Viner, Williams, Bayer, Olsson, <b>Alati</b>	2011-15	Pubertal transitions in mental health and behaviour: the PHASE-A study of social role and lifestyle transitions	NHMRC	Project	\$1,572,018
Rundle-Thiele, <b>Connor</b> , Drennan, Russell-Bennett, Leo, Percy	2014-16	Advancing prevention science: application of social marketing to change the drinking culture of young Australians	ARC	Linkage Project	\$67,792
Scott, McGrath, Najman, <b>Alati</b> , Mamun, Clavarino	2013-15	The outcomes of adolescents and young adults who experience hallucinations: a birth cohort study	NHMRC	Project	\$614,731
Teesson, Andrews, Newton, Slade, Chapman, Allsop, <b>Hides</b> , McBride	2013-16	The Climate Schools combined study: Internet-based prevention for anxiety, depression and substance use in young Australians	NHMRC	Targeted Call for Mental Health Research	\$1,400,000 (\$200,000 QUT)
Teesson, Baker, Mills, Kay-Lambkin, Haber, Baillie, Birchwood, Spring, Brady, ( <b>Hides</b> is an AI)	2013-18	Translating innovative prevention and treatment	NHMRC	Centre for Research Excellence in Mental Health and Substance Use	\$2,499,025
Toombs, Kisely, Hayman, <b>Hides</b> , Ranmuthugala, Chennakesavan, Brennan	2014-18	Indigenous Network Suicide Intervention Skills Training (INSIST): can a community designed and delivered framework reduce suicide/self-harm in Indigenous youth?	NHMRC	Targeted Call for Mental Health Research	\$40,000



# Research Higher Degrees On-going

Student Name	CYSAR Supervisors	Topics	Degree	Commencement Date
Charmaine Jensen	Wayne Hall	Non-medical use of prescription stimulants by Australian university students: Attitudes, prevalence of, and motivations for use	PhD	July 2013
Jason Coates	Jason Connor, Matthew Gullo, Genevieve Dingle	Targeting treatment in alcohol dependence	PhD	September 2014
Daniel Demant	Leanne Hides	Substance Use among Lesbians, Bisexuals, and Gays: The Influence of Social Identities and Community Attitudes	PhD	September 2014
Kiri Patton	Matthew Gullo, Jason Connor, Jeanie Sheffield	Impulsivity as mechanism of risk and target for prevention in adolescent alcohol use	PhD	September 2014
Timothy Piatkowski	Leanne Hides	Understanding what motivates young men's lifestyle choices for enhancing their appearance	PhD	2014
Nina Pocuca	Leanne Hides	Impact of personality risk profiles on the onset and trajectory of alcohol use in adolescents	PhD	2015

## Centre for Youth Substance Abuse Research

K Floor, Mental Health Centre  
Royal Brisbane and Women's Hospital  
Herston QLD 4006, Australia

### General enquiries

[cysar@uq.edu.au](mailto:cysar@uq.edu.au)

Phone +61 7 334 64834

Fax +61 7 336 55488

[cysar.health.uq.edu.au](http://cysar.health.uq.edu.au)



**CYSAR** Centre for Youth  
Substance Abuse Research

